

Jefferson County Comprehensive Plan Update - 2018



Jefferson County Planning Commission

Public Participation Overview

Adopted July 2018



RESOLUTION 2018-01
Jefferson County Board of Commissioners

A resolution adopting the Jefferson County Comprehensive Plan Update dated July 2018, as prepared by the Jefferson County Planning Commission and facilitated by The EADS Group, Inc.

WHEREAS, the Pennsylvania Municipalities Planning Code (MPC) requires that County comprehensive plans be updated every ten (10) years; and

WHEREAS, the MPC outlines content and procedural requirements associated with the preparation, review and approval of County comprehensive plans that have been followed in this County Plan Update process; and

WHEREAS, the Jefferson County Planning Commission coordinated the preparation of the Jefferson County Comprehensive Plan Update that has been published in four (4) documents, entitled *Existing Conditions and Recommendations*; *Public Participation Overview*; *Recreation and Tourism Strategy*; and *Community Infrastructure Strategy*, all dated July 2018 and comprised of maps, charts, textual matter and narratives, and other matters that form the whole of the County Plan Update; and

WHEREAS, the Jefferson County Planning Commission conducted a robust and inclusive public participation and engagement process, and

WHEREAS, the proposed Jefferson County Comprehensive Plan Update was submitted to contiguous counties and school districts within and contiguous to Jefferson County, and was otherwise made publically available for municipal and citizen review and comment; and


WHEREAS, the Jefferson County Planning Commission adhered to the Public Meeting, Public Hearing and Public Review period requirements of the MPC in finalizing the County Plan Update; and

WHEREAS, the Jefferson County Planning Commission duly noted and considered all public comments received in finalizing the County Plan Update; and

NOW THEREFORE BE IT RESOLVED, that the County Commissioners of Jefferson County hereby adopt the Jefferson County Comprehensive Plan Update that has been published in four (4) documents, entitled *Existing Conditions and Recommendations*; *Public Participation Overview*; *Recreation and Tourism Strategy*; and *Community Infrastructure Strategy*, all dated July 2018 and comprised of maps, charts, textual matter and narratives, and other matters that form the whole of the County Plan Update; and fulfills the County's responsibilities under the MPC.

Dated this the 11th day of July 2018.

JEFFERSON COUNTY COMMISSIONER



John D. Matson, Chairman



Herbert L. Bullers, Jr.



Jeffrey E. Pisarcik

Stakeholder Participation

The Jefferson County Planning Commission carried out multiple public engagement initiatives during the Comprehensive Plan update process, including the following:

- Public Meeting #1– held on March 22, 2017 at the Heritage House in Brookville, PA
- Public Meeting #2– held on September 27, 2017 at the Jefferson Place 2nd Floor Conference Room in Brookville, PA
- The Municipalities Planning Code (MPC) required Public Meeting (Public Meeting #3) – held on March 28, 2018 at the Heritage House in Brookville, PA
- The Municipalities Planning Code (MPC) required Public Hearing – held on June 26, 2018 at the Jefferson Place 2nd Floor Conference Room in Brookville, PA
- Community Survey – conducted on-line and hard copies distributed at municipal buildings and manually entered into the *SurveyMonkey* System on <https://www.surveymonkey.com/r/Jeffersoncountyplan2017>. A total of 238 responses were received

Information regarding each Public Meeting along with a meeting summary is provided on the following pages. A summary of the Community Survey results is also provided.

In addition, a *Recreation and Tourism Working Group* and a *Community Infrastructure Working Group* were regularly engaged at review meetings during the planning process. Additional information on these meetings are included in the *Recreation and Tourism*, and the *Community Infrastructure Strategies*. The meetings were held consecutively to allow members of both Working Groups to fully participate. The Working Group meetings were conducted as follows:

- May 31, 2017 – Introduction, review of Scope, Expectations and Roles. Review and input on preliminary mapping and inventories as well as identification of priority issues and opportunities and input on preliminary goals and recommendations
- September 13, 2017 – Review and input on revised mapping and provide input on recommendations and actions
- January 24, 2018 - Review draft recommendations and actions and provide input on implementation

Members of the Jefferson County Planning Commission participated in the Public Meetings and the Working Group meetings described above. These meetings provided opportunities to engage the Planning Commission and also kept them informed of the status of the planning process and on the components of the *Recreation and Tourism*, and the *Community Infrastructure Strategies*.

Public MEETING #1

Jefferson County Comprehensive Plan Update



Come join us to plan for the...

FUTURE OF YOUR COUNTY

WHERE

The Heritage House
4 Sylvania Street
Brookville, PA 15825

WHEN

Wednesday
March 22, 2017
At 6:00 PM



Jefferson County
Pennsylvania

WHAT

The Jefferson County Planning Commission has initiated an update of the Jefferson County Comprehensive Plan, last updated in 2005. This Plan will provide an analysis of change, a general agenda and a blueprint for the future, while maintaining and enhancing the quality of life for Jefferson County and the municipalities. To begin the public participation process, a Public Meeting has been scheduled.

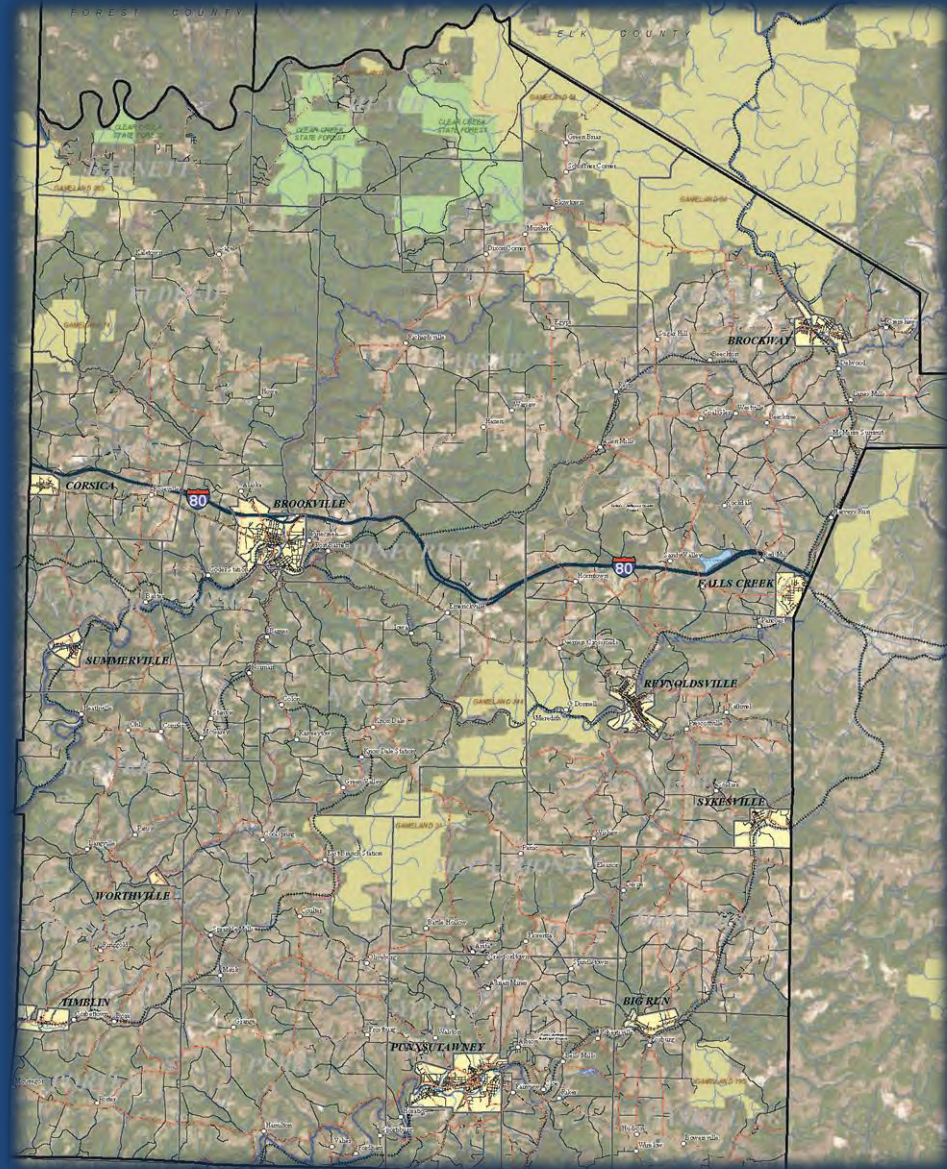
TOPICS

Information on the planning process in general, various types of participation and engagement that are part of the process, as well as public input on assets and issues faced by the communities in Jefferson County.

Jefferson County Comprehensive Plan Update

Jefferson County Planning Commission

Public Meeting No. 1
March 22, 2017



Jefferson County Comprehensive Plan Update

AGENDA

- **Introductions**
- **Background/Context**
- **Overview/Factoids**
- **Participation**
- **Public Discussion**
- **Next Steps**



Background

Context



Jefferson County Comprehensive Plan Update

Why - Comprehensive Plan provides an agenda and framework

- *"Planning is the act of considering the impact of a present action on the future."*
- *"There are consequences for every action and consequences for no action."*

Counties are required to update their Plans every 10 years Jefferson is due for an update now



Jefferson County Comprehensive Plan Update

How - Comprehensive Planning in PA is enabled by the PA Municipalities Planning Code but has local flexibility and is adaptable:

- **Issues and Results Orientation**
- **Local Asset-Based**
- **Outcomes - Desired and Practical Outcomes**

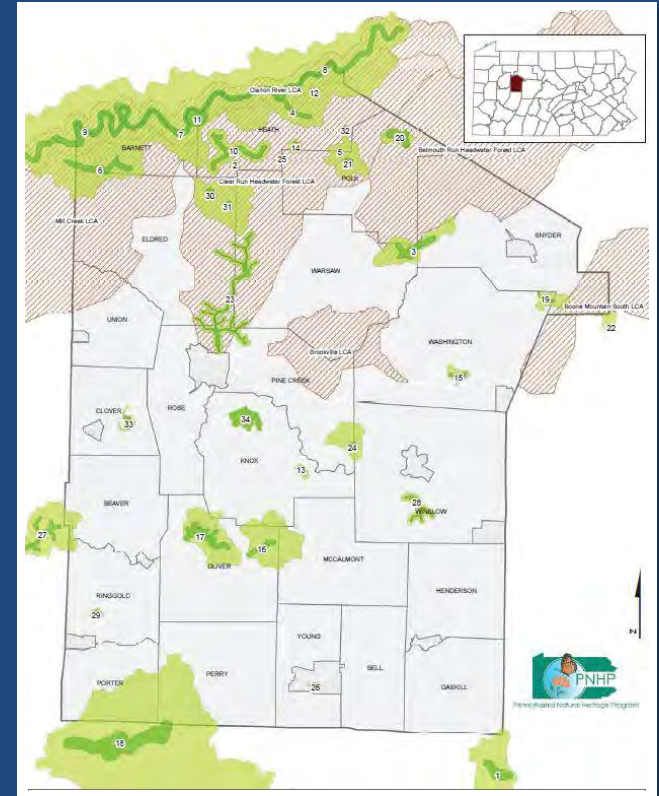


Jefferson County Comprehensive Plan Update

Overview of the Approach

.... not a “cookie cutter” approach

- Review/Analyze background conditions, past studies, assets and issues
- Continually engage the community and stakeholders
- Arrive at a common vision
- Develop a multi-faceted strategy that helps attain that vision

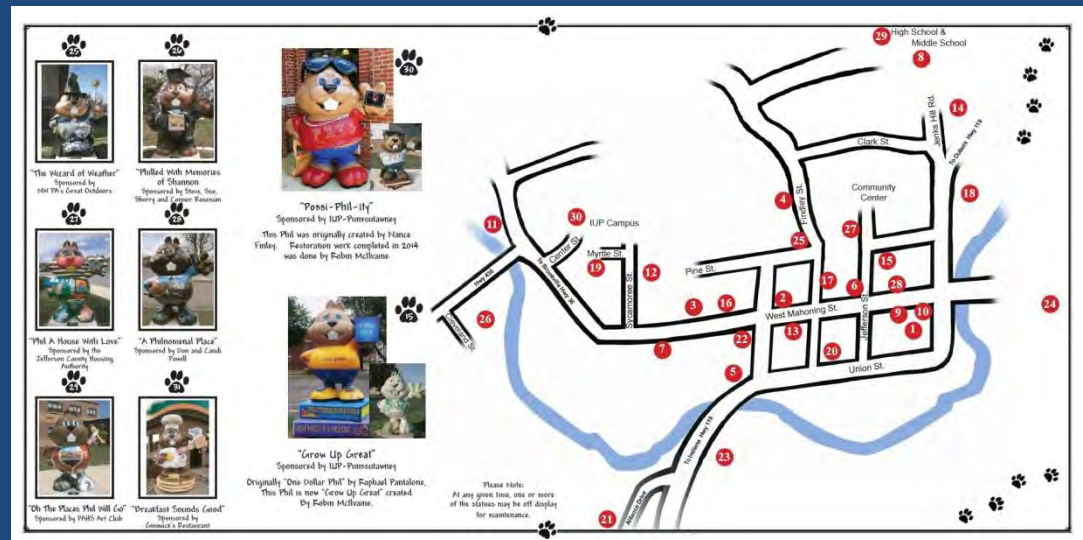


Jefferson County Comprehensive Plan Update

Overview of the Approach –

focusing on two (2) Strategic Goals:

- Community Infrastructure Improvements
- Recreation and Tourism Improvements
 - Working Groups
 - Background Analysis
 - Strategic Plan



"The Wizard of Weather"
Sponsored by 100th Great Outdoors



"Pilled With Memories of Stanzas"
Sponsored by Steve, Tom, Henry and Greg Reardon



"Phil A. House With Love"
Sponsored by the Jefferson County Housing Authority



"A Phenomenal Place"
Sponsored by Tom and Carol Fossil



"Oh The Places Phil Will Go"
Sponsored by PMA's Art Club



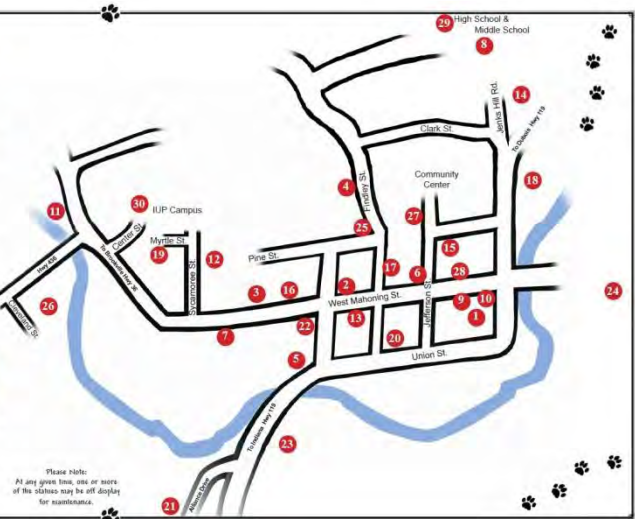
"Dreadful Sounds Good"
Sponsored by Gumbel's Restaurant



"Pee-Phil-ly"
Sponsored by IUP-Punxsutawney
This Phil was originally created by Nancy Finley. Restoration work completed in 2014 was done by Faben McKeane.



"Grow Up Great"
Sponsored by IUP-Punxsutawney
Originally "One Dollar Phil" by Faythul Pantalone. This Phil is now "Grow Up Great" created by Faben McKeane.



Please note:
At any given time, one or more of the statues may be off display for maintenance.

Jefferson County Comprehensive Plan Update

Overview of the Approach –

focusing on two (2) Strategic Goals:

- ***Issue-oriented*** planning addressing current & anticipated real-world needs, building on strengths & addressing issues
- Careful ***balancing*** of variables – preservation & development, growth and conservation, new ways of promoting the County



Overview

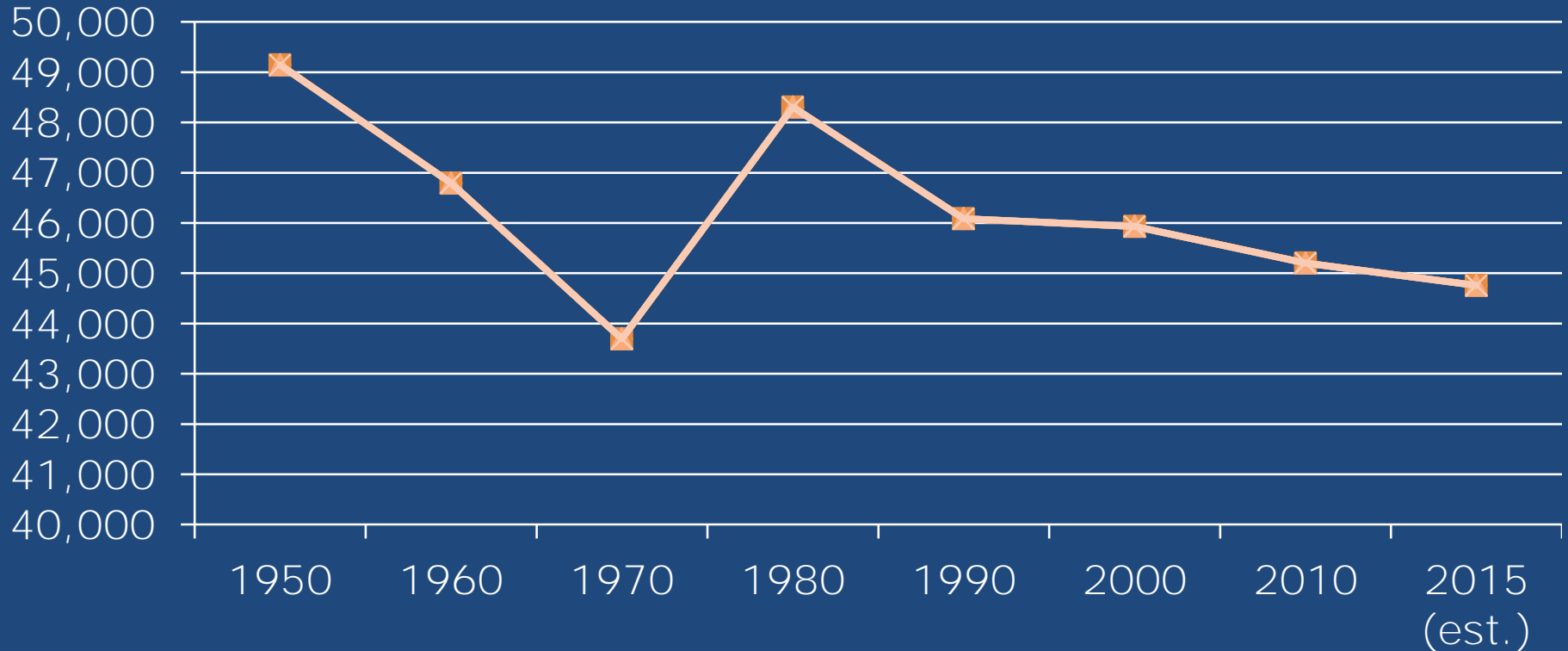
Some Factoids



Jefferson County Comprehensive Plan Update

FACTOIDS – County Population

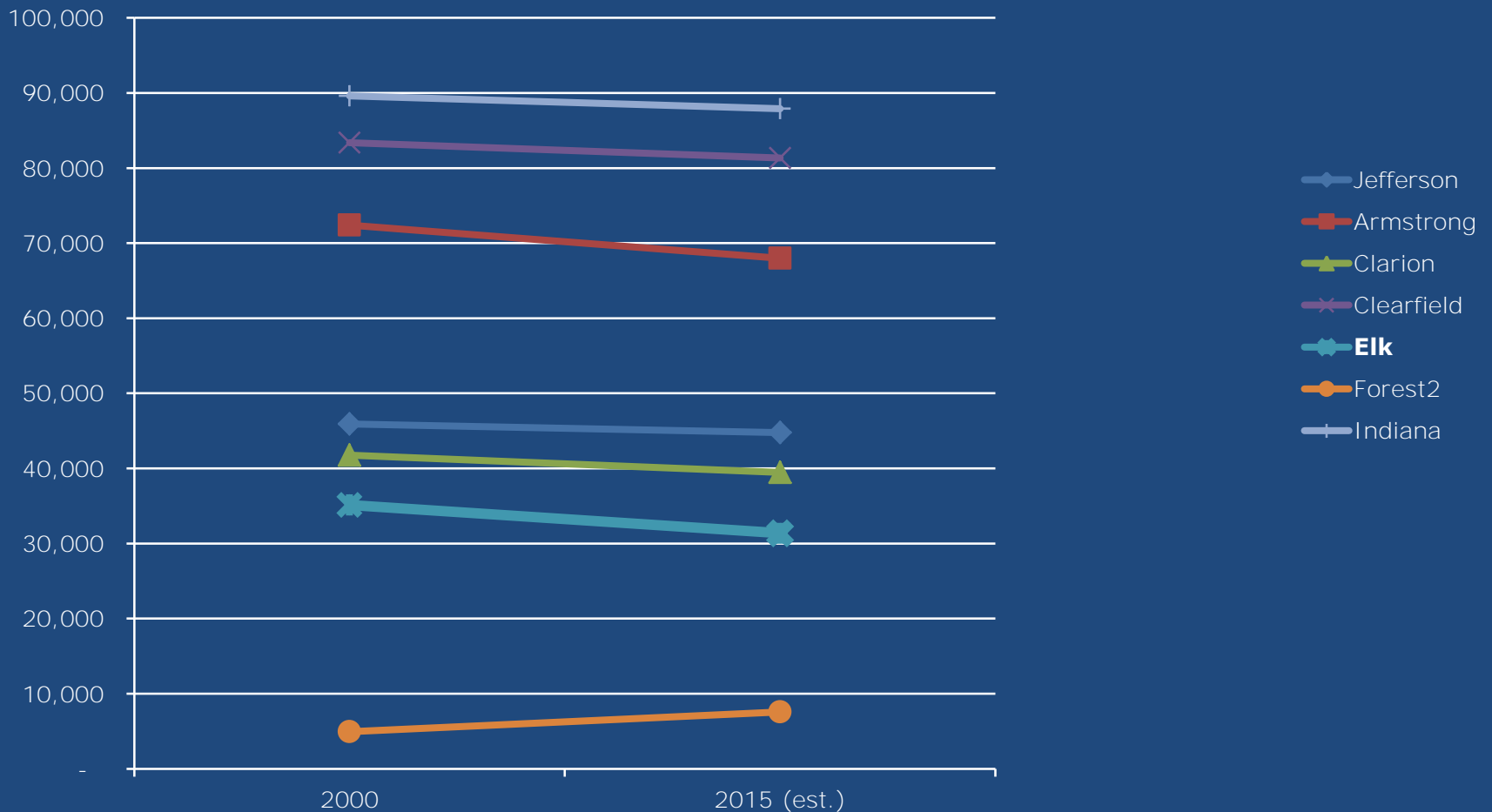
- since 1950 - population has decreased by 9%
- since 2000 – population has decreased by 2.6%



Jefferson County Comprehensive Plan Update

FACTOIDS – Regional Population Change 2000-2015

- County population decreased by 2.6%
- All surroundings Counties except Forest also experienced population declines

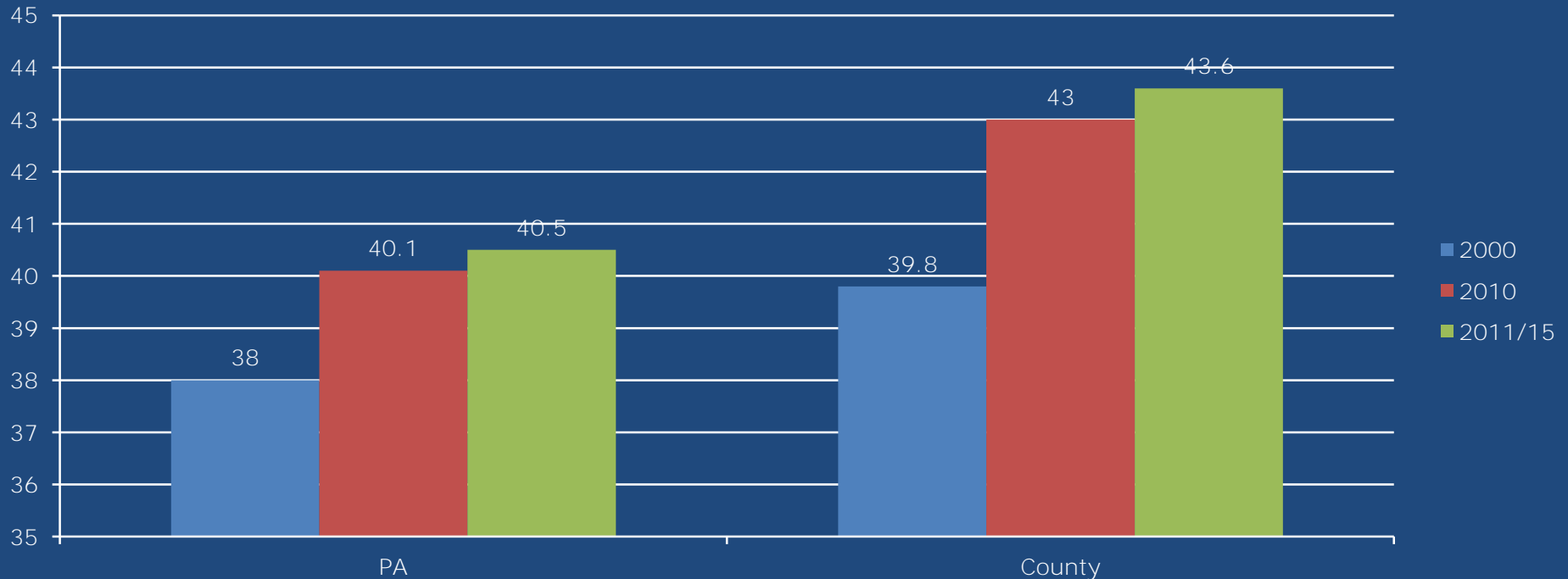
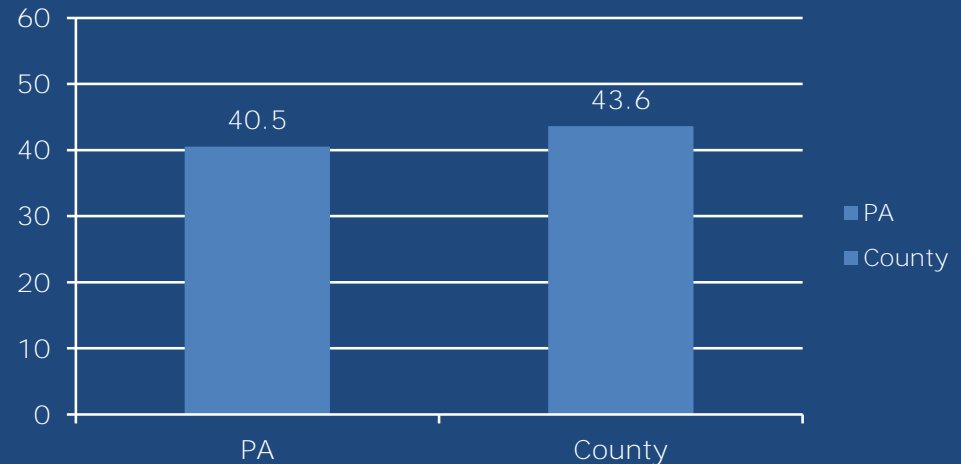


Jefferson County Comprehensive Plan Update

FACTOIDS – Population Age Profile

- **2011/15 – older age profile than State and**
- **Increasingly older population**

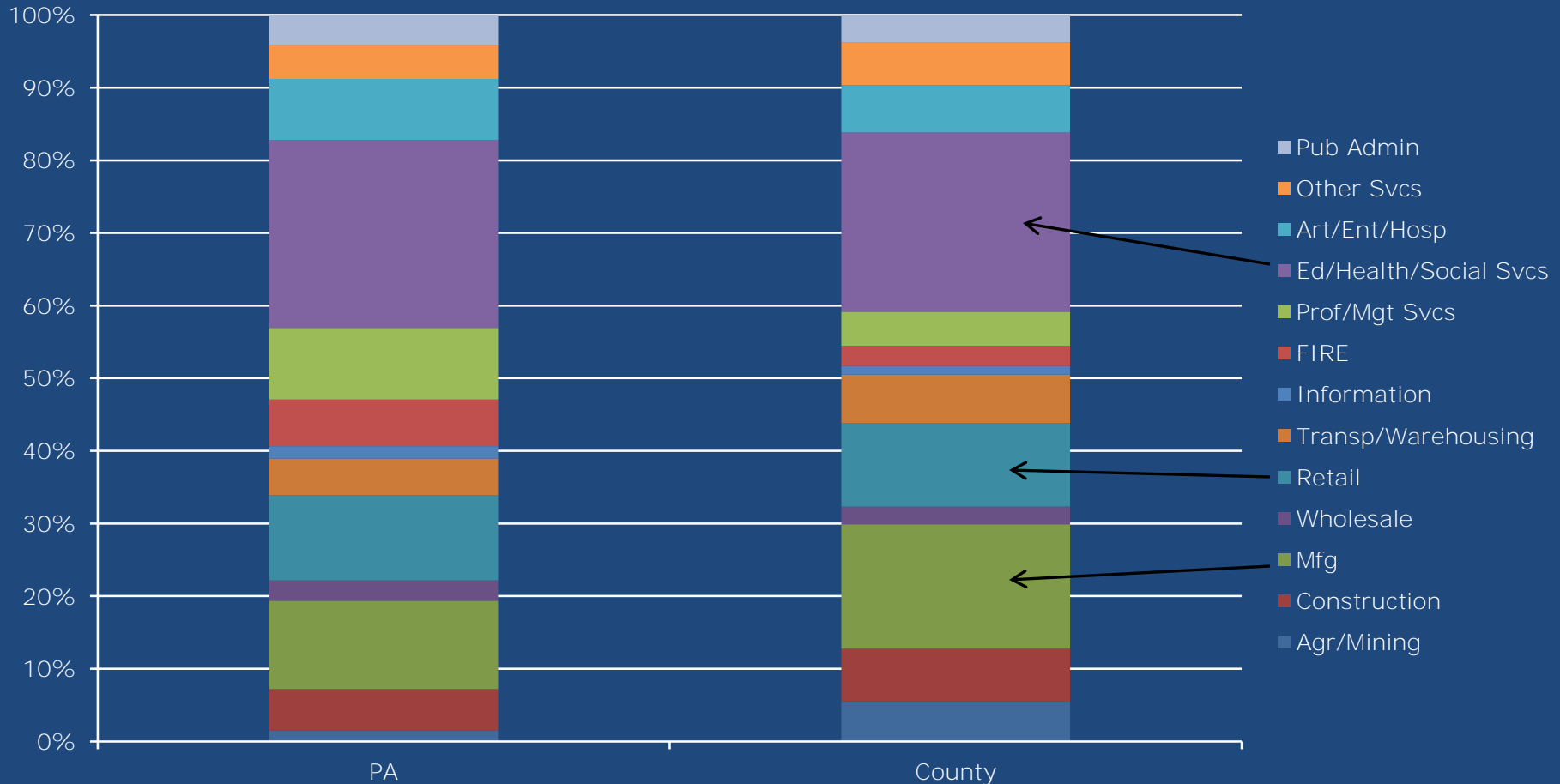
Median Age 2011/15



Jefferson County Comprehensive Plan Update

FACTOIDS – Employment by Industry

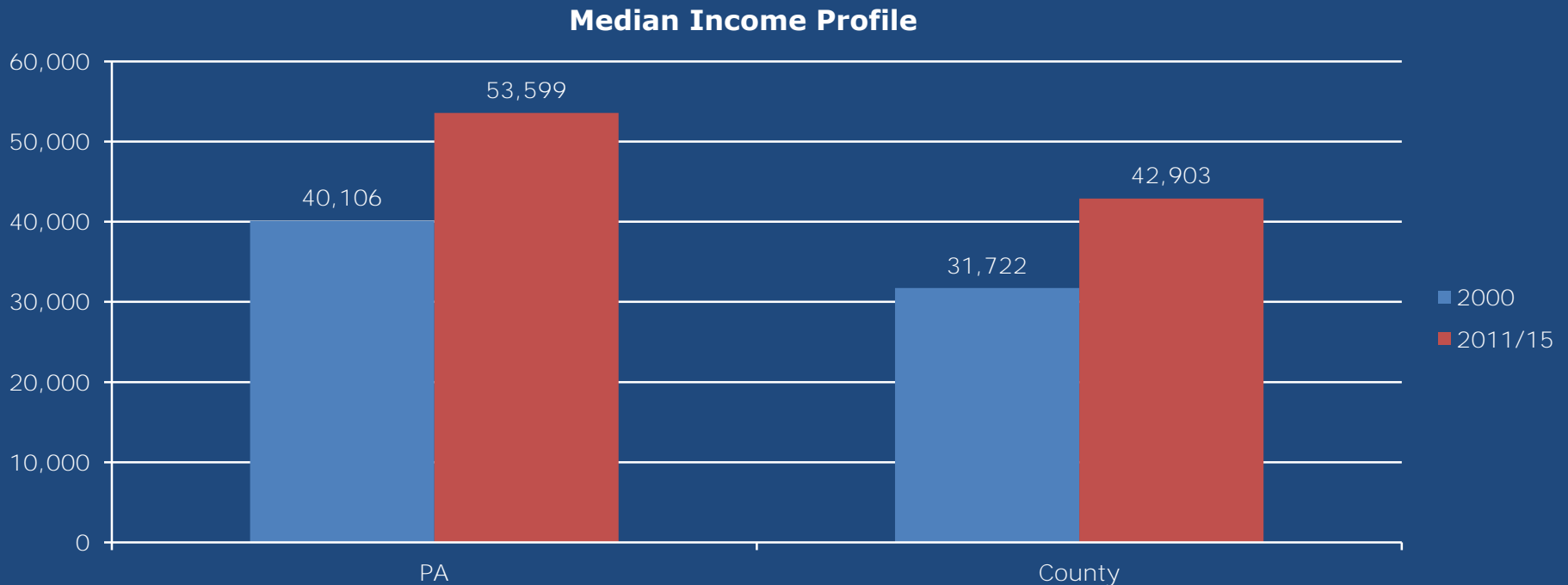
- **2011/15 - Manufacturing, Retail and Education/Health/Social predominance**



Jefferson County Comprehensive Plan Update

FACTOIDS – Income Profile

- Median incomes in County lower than State-wide
- Median income difference with State in 2011/15 is larger than difference in 2000



Public Participation

Very Important

Jefferson County Comprehensive Plan Update

<https://www.surveymonkey.com/r/Jeffersoncountyplan2017>



Jefferson County Comprehensive Plan Update - 2017-18

Community Survey

The Jefferson County Planning Commission is carrying out the regular update of the County's Comprehensive Plan and appreciates your participation and interest in enhancing the quality of life in Jefferson County! In the ten years since the last County Plan, some things have changed and others have remained the same. This survey is one method being used to take the pulse of the County. Please take a few minutes to complete the questionnaire. While most require choosing responses by checking the box, there are spaces for your individual comments as well. Please note at the end of the survey your responses are not registered until you have answered the questions as requested and see the page with the word "Completed" on it.

1. What do you like most about Jefferson County? (Check no more than your top 5)

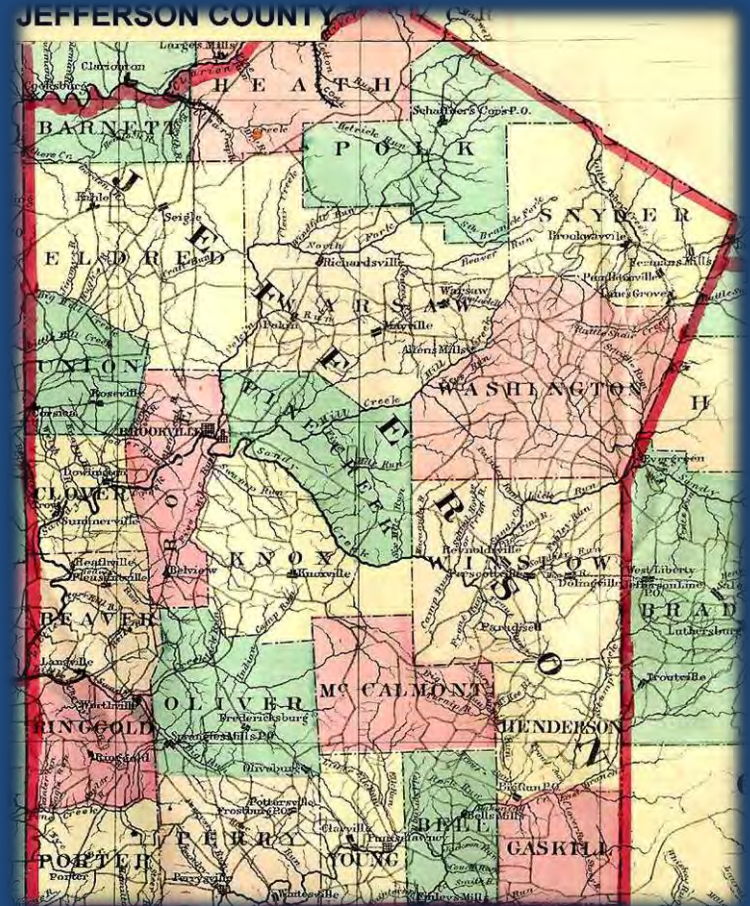
- | | | |
|---|--|---|
| <input type="checkbox"/> Rural/Small town setting | <input type="checkbox"/> Natural resources | <input type="checkbox"/> Outdoor recreation |
| <input type="checkbox"/> Public services available | <input type="checkbox"/> Responsive local government | <input type="checkbox"/> Tourism Resources |
| <input type="checkbox"/> Housing conditions | <input type="checkbox"/> Health care availability | <input type="checkbox"/> Public safety and security |
| <input type="checkbox"/> Economic opportunities | <input type="checkbox"/> Regional Highways/Air Service | <input type="checkbox"/> Cost of living |
| <input type="checkbox"/> Friendly people | <input type="checkbox"/> Good quality school systems | <input type="checkbox"/> Civic pride of the people |
| <input type="checkbox"/> Good place to raise a family | <input type="checkbox"/> Indoor recreation | <input type="checkbox"/> Cleanliness |
| <input type="checkbox"/> Visual Quality | <input type="checkbox"/> Local events/festivals/etc. | |

..... **Hard Copies Available**

Jefferson County Comprehensive Plan Update

Public Participation – Other Methods:

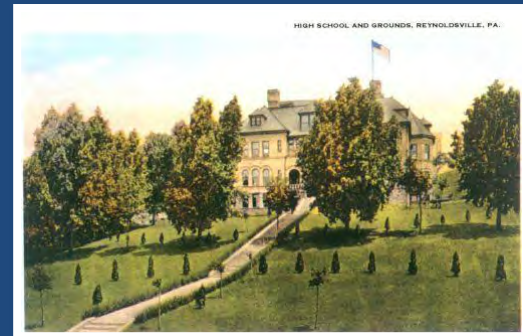
- Jefferson County Planning Commission Meetings
- Public Meeting No. 2 (July/August)
- Public Meeting No. 3 (October/November)
- Public Hearing



Jefferson County Comprehensive Plan Update

Public Input – Strengths, Weaknesses, Opportunities and Issues

- Strong points?
- Community issues and problems?
- Community changes – good and bad?
- What we want in 10 or 20 years?
- What would you change if you could?
- . . . Helps us identify critical issues



Jefferson County Comprehensive Plan Update

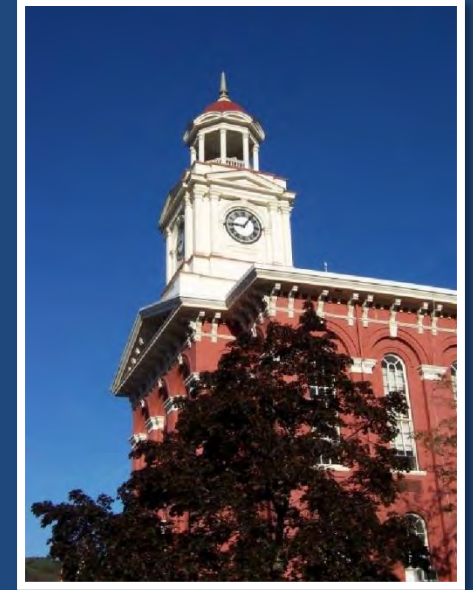
Major Issues Facing County

- **Development issues**
- **Social issues**
- **Community needs**
- **Other issues**

Jefferson County Comprehensive Plan Update

Next Steps

- Complete Background Studies
- Establish Working Groups
- Public Meeting No. 2



THANK YOU!

Jefferson County Planning Commission

Jefferson County Comprehensive Plan Update
Public Meeting No. 1
March 22, 2017

A public meeting introducing the planning effort was held on this date at 6:00 PM at the Heritage House in Brookville. The meeting was introduced by Brad Lashinsky representing the Planning Commission who is guiding this planning process and was conducted by staff of The EADS Group, the planning consultant. Thirty (30) persons signed the attendance sheet. The Meeting was divided into four general areas - a background and context for planning in general, an overview of preliminary characteristics referred to as “factoids”, a review of the public participation process being employed, and the opportunity for public engagement and feedback.

1. **Background and Context** – The planning process was reviewed in terms of approach and as enabled in the Pennsylvania Municipalities Planning Code (MPC) and state of the art in planning that emphasizes issues-oriented and implementable recommendations. As opposed to past planning that divided recommendations into “planners categories” (i.e. land use, transportation, community facilities, etc.), it was noted that this plan will be based on issues and opportunities and will focus on developing realistic recommendations. It was further explained that the Plan will focus on two (2) strategic goals: Community Infrastructure Improvements and Recreation and Tourism Improvements.
2. **“Factoids”** – Various factors were reviewed graphically and in brief narratives as a setting for the planning process, including the population profile and decline, income profile and change, and employment profile.
3. **Public Participation** – The participation process was reviewed including the community survey, Planning Commission meetings, Public Meeting No.2 that will occur in mid to late summer and the MPC-mandated Public Meeting (Public Meeting No.3) and Public Hearing.
4. **Public Input/Feedback** – The engagement focused on three general areas, and is summarized on the following pages.

Major Positive Changes in past 10 Years

The attendees were asked to describe the major positive changes in Jefferson County in the recent past.

- There has been an increase in the number of multi-unit and single family senior housing projects in the Punxsutawney and Brookville areas. The demand for this type of housing has been recognized by developers in the County.
- County school districts, including Brookville and Brockway, are recognized as being quality school districts by residents.

- Recent completion of the 41-mile Redbank Valley Trail into Brookville. The trail now connects Brookville to the Allegheny River and to the Armstrong Trail.
- There are a high number of tourism opportunities including festivals and events in the County.
- Hi-speed internet access has increased in the County but gaps still exist.
- There are a number of Post-secondary schools in the County (BCAT, BC3, IUP-Punxy, Jeff Tech). And these schools are revising their curriculums to reflect the types of business/technical skills needed in the County.
- Jefferson County is half way (drive time) between New York City and Chicago. An advance in electronic logging of drive time hours by trucking companies is increasing the need for trucks to stop and rest in the County. Increases in overnight truck parking at I-80 interchanges in the County are being observed.
- There has been an increase in the amount of freight transported by rail to Falls Creek and other points located just outside of the County.
- Improved Air Service at the airport has resulted from the recent contract with Southern Airways.
- Foreign Trade Zone (FTZ No. 254) is located in Jefferson County and is generally centered around the Airport. The FTZ is operated by the North Central Pennsylvania Regional Planning and Development Commission.
- Brookville School District is updating their Comprehensive Plan over the next two (2) years. Opportunities to have consistent recommendations with County Plan.

Major Negative Changes in past 10 Years

The attendees were asked to describe the major negative changes in Jefferson County in the recent past.

- The aging population in the County is evidenced by the number of multi-unit and single family senior housing projects being constructed in the County.
- The drug problem is increasing across the County
- A school district representative noted that the number of children on free or reduced lunches has increased over the years and is now upto 50% in one district.
- Population declines are resulting in school districts moving towards closing schools within their districts. Concern is they are losing capacity if the population of school aged children increases.

Major Issues Facing the County

The attendees were asked to describe the major issues facing Jefferson County. The comments received reflected opportunities and/or areas that the County Plan should focus on. Comments received are organized into three (3) categories: Economic Development; Infrastructure and Recreation/Tourism.

Economic Development:

- The County Plan should identify what business/technical skills and job sectors are in demand in the County. This information should then be shared with post-secondary schools in the County.
- How do we change the mindset (thinking) of millennials living in the County to get them to want to work in businesses/industries located in the County.
- The County needs to capitalize on the increased number of trucks parking overnight at I-80 intersections.
- Develop a strategy to connect businesses/industries in the County with opportunities resulting from the Foreign Trade Zone. Need to better distribute (communicate/educate) information regarding the Zone and its benefits.
- Explore opportunities to create Sub Foreign Trade Zones in the County.

Infrastructure:

- Better and more consistent coordination is needed between municipal authorities/private water suppliers and developers/builders across the county. Noted that difficult to work with authorities can impede development.
- Include Telecommunications (hi-speed internet) in the discussion of infrastructure improvements. Identify targeted Telecommunication upgrade areas in the County.
- Improve freight rail service and rail siding opportunities in the County. Inventory potential rail siding improvement projects.

Recreation/Tourism:

- Connect the Redbank Valley Trail to the Five Bridges Trail and into Brockway Borough. Crossing I-80 is a major impediment.
- Priority is to connect a trail to the Scripture Rocks Heritage Trail in Brookville.
- Complete an inventory of all tourism and recreation resources in the County and prepare a Visitor brochure/guide highlighting those resources.
- Increase the number of information/wayfinding signs just off of the I-80 intersections promoting County attractions and Historic Districts.
- There should be a focus on extending sewer/water and telecommunications to I-80 intersections.
- There is a need to inventory all festivals, events, tourism and recreation sites in the County and for coordinators/operators to better communicate and coordinate amongst themselves to identify cross- promotion opportunities and to develop multiple-destination trip promotion opportunities.

Other Input – The Brookville School Superintendent, Robin Fillman, was in attendance and she offered assistance and availability to work with the County as opportunities present themselves. She also noted that the District was updating their Comprehensive Plan and that she would like to identify ways their Steering Committee could be involved with the County's Comprehensive Plan Update process. She identified that having a meeting between the Jefferson County Planning Commission and their Steering Committee to review the County Plan update would be beneficial. She also offered to distribute the Community Survey link to her contacts.

JEFFERSON COUNTY COMPREHENSIVE PLAN UPDATE

PUBLIC MEETING #1

March 22, 2017 - 6:00 P.M.

The Heritage House - 4 Sylvania Street - Brookville, PA

NAME	ORGANIZATION	ADDRESS	E-mail
Bill Setree	Jefferson County	155 Main Street Brookville, PA 15825	bsetree@jeffersoncountypa.com
Mark Adams	Sen Scarnati	410 main St Brookway PA 15824	madams@psen.gov
Jill Rend	BC3 @ Brockway	1200 Wood St Brockway PA 15824	jill.martin-rend @BC3.edu
LARRY BOWERS	Fish Co, Lehigh Twp Supervisor	1224 Bowlers Rd Punxsutawney, Pa. 15767	LJPA BOWERS @ YAHOO.COM
TIM BRITTON	TIM BRITTON CONSTRUCTION	109 MAIN ST FALLS CREEK	Timbritton@ VERIZON.NET
THOMAS KUNDRICH	SYKESSVILLE BORO	109 SHARPER ST SYKESSVILLE, PA 15865	TKUNDRICH@AOL.COM
MICHAEL DEFELICE	^{Punxsutawney Pa 15767} 106 PERSKET DRIVE	106 PERSKET DRIVE	
KAREN ALLGEIER	^{BROOKVILLE} 71 Sayer St. Borough Council	71 Sayer Street Brookville PA 15825	KALLGEIER@ WINDSTREACH.NET
Shawn Wessell	Jefferson Conservation Dist	1514 Route 28 Brookville PA 15825	swessell@windstream.net
Rose James	The Punxsutawney SPIRIT	510 Pine St. Punxsutawney	TKlaiber@punxsutawney spirit.com
LeeAnn Hinder	ROSE, BEAVER + OLIVER TOWNSHIP	3520 Belshazzar Rd Brookville PA 15825	leeannhinde@comcast.net
Brad Lashinsky	Jefferson County	155 Main St Zadler Brookville	blashinsky@jeffersoncountypa.com
Jim Johnson		Punxsutawney, Pa	

NAME	ORGANIZATION	ADDRESS	E-mail
Dana Shick	Brookville Borough	18 Western Ave Ste A Brookville, PA 15825	brookvillemanager@windstream.net
CHASE SHICK		534 TAYLOR ST Brookville Pa 15825	CSSHICK@ELITETECHCOMPUT.COM
Wayne Rishard	Gaskill Twp	108 Greenwalt Ln Punxsutawney Pa	
Bill Snyder	Ringgold Twp	93 Hines Rd Ringgold	kingtown@comcast.net
Robin Fillman	Brookville Schools	Jenk St Brookville	rfillman@basd.us
Heck Sillescu	County	1713 HAZEN - Richardsville Schookville	hbulow@jeffersonco.net
Tom Dinger	BMA	24 Walnut St Okw.	tdinger@white-brookville.com
Jason Brown	Brookville Police	70 2nd Street Suite B Brookville, 15825	chief.brookvillepolice@comcast.net
Ben White	Punxsutawney Borough	30 E Mahoning St	bwhite@punxsutawneyborov.com
Mabel O. Cunkle	Brookville	549 5th St B22 Brookville, Pa	
Phil Hynes	Brookville Borough Redbank Valley Twp	14 Oak St Brookville	philhynes@yahoo.com
Sandy + Terry Mateer	Redbank Valley Twp	209 Lafayette St. New Bethlehem, PA	smateer1@comcast.net
Laura Lynn Yoke	Freelance Writer Jeffersonian Democrat	P.O. Box 327 Big Run, PA 15715	smallcase LLYWRITER@VERIZON.NET
Boyd Kerr	RESIDENT	Brookville	BoydKerr@comcast.com
Ed Shields	Burnett Township	Rt 36 Sgoel, PA 15860	

Public MEETING #2

Jefferson County Comprehensive Plan Update



Come join us to plan for the...

FUTURE OF YOUR COUNTY

WHERE

Jefferson Place
2nd Floor Conference Room
155 Main Street, Brookville, PA 15825

WHEN

Wednesday
September 27, 2017
At 6:00 PM



Jefferson County
Pennsylvania

WHAT

The Jefferson County Planning Commission is working on a Comprehensive Plan Update for the County. The Plan Update results in a vision for the future and ways to attain that vision. To continue the planning process, a Public Meeting has been scheduled.

TOPICS

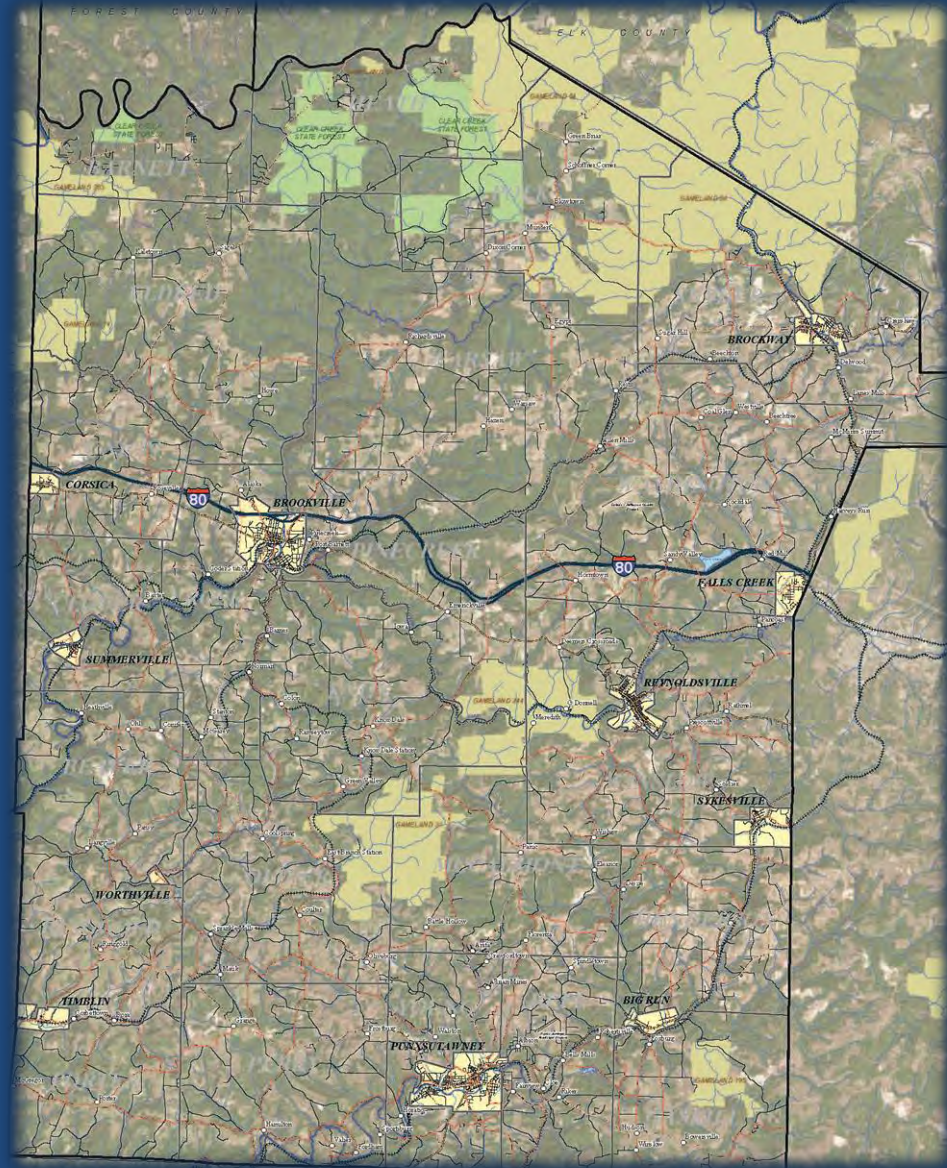
1. A review of the issues and opportunities identified to date
2. A review of the results of the Jefferson County Community Survey
3. An update on the Strategies being developed for Recreation, Tourism and Community Infrastructure Improvements.

Time will be provided for public input.

Jefferson County Comprehensive Plan Update

Jefferson County Planning Commission

Public Meeting No. 2
September 27, 2017



Jefferson County Comprehensive Plan Update

AGENDA

- **Introductions/Background**
- **Public Meeting No. 1 Summary**
- **Community Survey Summary**
- **Strategic Goals Overview**
- **Public Discussion**
- **Next Steps**



Jefferson County Comprehensive Plan Update

Why - provides an agenda and framework

How - is enabled by the PA Municipalities Planning Code but has local flexibility and is adaptable:

- **Issues and Results Orientation**
- **Local Asset-Based**
- **Outcomes - Desired and Practical Outcomes**

**Counties are required to update their Plans every 10 years
.... Jefferson is due for an update now**



Public Meeting No. 1

Summary



Jefferson County Comprehensive Plan Update

Public Meeting No. 1 – Summary

Positive Changes:

- Senior Housing Opportunities
- Redbank Valley Trail completion
- Revisions to post secondary school curriculums
- Improved Air Service
- Increases in overnight truck parking at I-80 interchanges
- Foreign Trade Zone (No. 254)

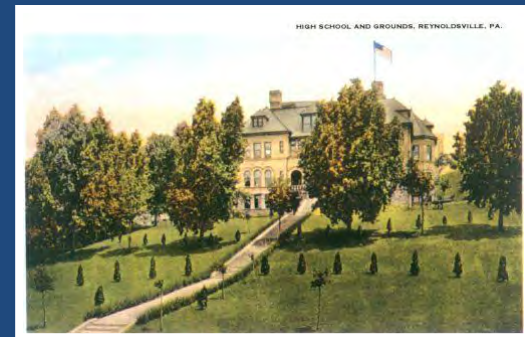


Jefferson County Comprehensive Plan Update

Public Meeting No. 1 – Summary

Negative Changes:

- Aging Population – increases in senior housing units experienced
- Drug problems
- Increases in the number of free or reduced school lunches
- Population decline experienced in the County is having an impact on school district enrollments



Jefferson County Comprehensive Plan Update

Public Meeting No. 1 – Opportunities

Economic Development:

- Connect younger residents with available jobs in the County
- Capitalize on increased Truck traffic at I-80 intersections
- Capitalize on existing Foreign Trade Zone at airport



Jefferson County Comprehensive Plan Update

Public Meeting No. 1 – Opportunities

Infrastructure:

- Better coordination between developers and municipal authorities
- Telecommunication upgrades
- Freight Rail Service



Jefferson County Comprehensive Plan Update

Public Meeting No. 1 – Opportunities

Recreation/Tourism:

- Identify/complete Trail extensions
 - Five Bridges Trail
 - Scripture Rocks Trail
 - Brockway Trail Town Route
 - Punxsutawney Area Trail(s)
- Inventory festivals and events and coordinate with providers
- Inventory tourism/recreation resources

Community Survey

Results

Jefferson County Comprehensive Plan Update Community Survey – Summary



Jefferson County Comprehensive Plan Update - 2017-18

Community Survey

The Jefferson County Planning Commission is carrying out the regular update of the County's Comprehensive Plan and appreciates your participation and interest in enhancing the quality of life in Jefferson County! In the ten years since the last County Plan, some things have changed and others have remained the same. This survey is one method being used to take the pulse of the County. Please take a few minutes to complete the questionnaire. While most require choosing responses by checking the box, there are spaces for your individual comments as well. Please note at the end of the survey your responses are not registered until you have answered the questions as requested and see the page with the word "Completed" on it.

1. What do you like most about Jefferson County? (Check no more than your top 5)

- | | | |
|---|--|---|
| <input type="checkbox"/> Rural/Small town setting | <input type="checkbox"/> Natural resources | <input type="checkbox"/> Outdoor recreation |
| <input type="checkbox"/> Public services available | <input type="checkbox"/> Responsive local government | <input type="checkbox"/> Tourism Resources |
| <input type="checkbox"/> Housing conditions | <input type="checkbox"/> Health care availability | <input type="checkbox"/> Public safety and security |
| <input type="checkbox"/> Economic opportunities | <input type="checkbox"/> Regional Highways/Air Service | <input type="checkbox"/> Cost of living |
| <input type="checkbox"/> Friendly people | <input type="checkbox"/> Good quality school systems | <input type="checkbox"/> Civic pride of the people |
| <input type="checkbox"/> Good place to raise a family | <input type="checkbox"/> Indoor recreation | <input type="checkbox"/> Cleanliness |
| <input type="checkbox"/> Visual Quality | <input type="checkbox"/> Local events/festivals/etc. | |

Jefferson County Comprehensive Plan Update

Community Survey – Summary

- 238 total responses
- 28 out of 32 municipalities had a resident respond
- Likes – rural/small town setting; County is a good place to raise a family.
- Strengths – history and heritage of the County; good public safety; safe drinking water.
- Major Problems – Drugs; loss of good paying jobs; loss of younger residents.
- Weaknesses – lack of employment opportunities; shopping/social/cultural/entertainment options; air service; housing/property conditions.

Jefferson County Comprehensive Plan Update

Community Survey – Summary

- *Public Services - High Satisfaction* - “the basics” - fire, police, electric service; visual quality/aesthetics; public sewage and water service.
- *Public Services – Low Satisfaction* - Public transit; municipal street/road maintenance; recreational facilities; internet/cellular telephone service.
- *Needs/Wants* - specialty retail stores; school district improvements; dining establishments; more industrial and business development.

Jefferson County Comprehensive Plan Update

Community Survey – Summary

- *Growth and Development* - overwhelming consensus on the need and want for more growth/development.
- *Development Regulations* - agreement that current County and municipal regulations are adequate to assure well planned future development.

Strategic Goals

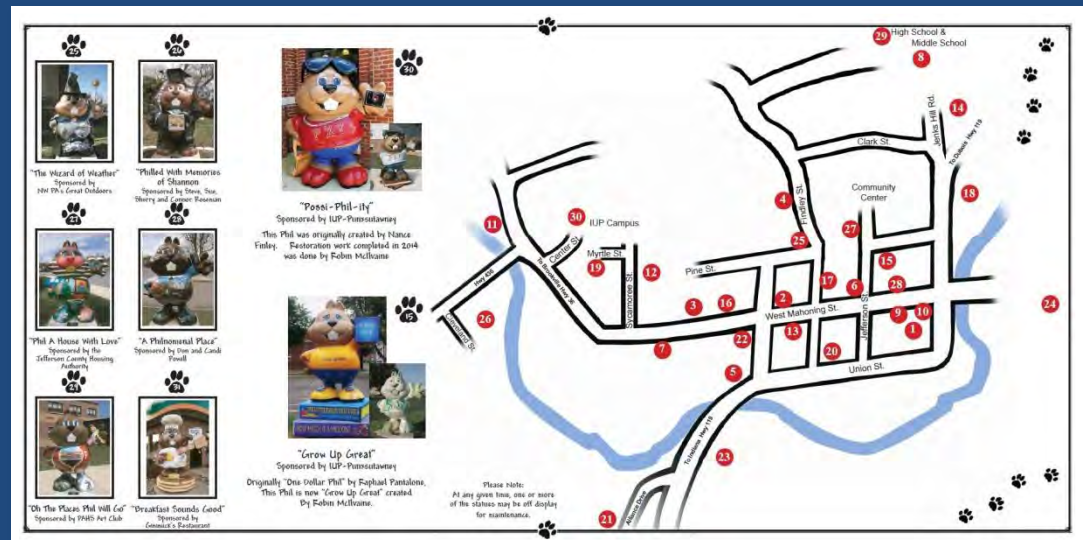
Working Groups



Jefferson County Comprehensive Plan Update

Overview of the Approach – focusing on two (2) Strategic Goals:

- Community Infrastructure Improvements
- Recreation and Tourism Improvements
 - Working Groups
 - Background Analysis
 - Strategic Plan



Jefferson County Comprehensive Plan Update

Community Infrastructure Working Group

Strategy:

- Identify Growth Areas in the County.
 - consistent with areas surrounding I-80 Interchanges
 - areas with Public Sewer and Water service
- Identify targeted Telecommunication upgrade areas
- Identify locations for additional Industrial and Business Parks
- Better utilization of the Foreign Trade Zone No. 254 in the County

Jefferson County Comprehensive Plan Update

Recreation and Tourism Working Group

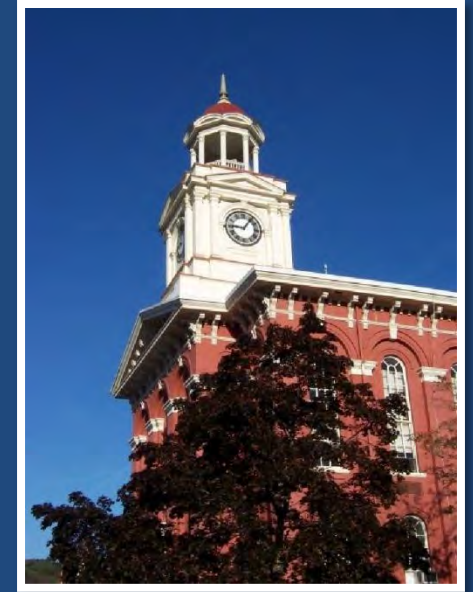
Strategy:

- Inventory/mapping of Natural and Outdoor Recreation resources
- Recommendations for water access points and water trails.
- Trail Extension/Expansion Recommendations
- Inventory/mapping of Destination Heritage Resources
- Identify enhancements (facilities/ATV Park) for Reynlow Park

Jefferson County Comprehensive Plan Update

Next Steps

- Continue Working Group
 - Meetings
- Public Meeting No. 3
- Public Hearing



THANK YOU!

Jefferson County Planning Commission



Jefferson County Comprehensive Plan Update
Public Meeting No. 2
September 27, 2017

A public meeting continuing the updating of the Jefferson County's Comprehensive Plan was held on this date at 6:00 PM in the 2nd floor conference room at Jefferson Place in Brookville. The meeting was introduced by Bill Setree representing the Planning Commission who is guiding this planning process and was facilitated by staff of The EADS Group, the planning consultant. Thirteen (13) persons signed the attendance sheet including Mark W. Lazzari and Tracy Frampton of The EADS Group. A brief introduction of the focused planning approach being used including the developing of two (2) issues-oriented and implementable Strategies was given. The Meeting then focused on reviewing the results of the public participation process being employed, including Public Meeting No. 1 and the Community Survey, and the Strategies being developed by the Community Infrastructure and Recreation and Tourism Working Groups. Opportunity for public engagement and feedback was also provided. The following highlights the key comments, input and guidance provided by attendees.

- Attendees asked how will the key areas/issues identified in the Public Participation process that are not addressed by the Community Infrastructure and Recreation and Tourism Strategies be documented in the Plan. The EADS Group noted that all key areas/issues are being documented in the Public Meeting summaries and the Community Survey summary prepared as part of the planning process. These summaries will be included in the Plan update. The EADS Group also noted that an issues matrix could be prepared that highlights all the key areas/issues identified with those being addressed by the Community Infrastructure and Recreation and Tourism Strategies specifically noted.
- A localized connection was made between the general issue of the *Drug Problem* and economic development. It was reported that employers are having a difficult time hiring new employees because applicants cannot pass the drug test issued during the hiring process. It was further noted how this is hindering economic growth as companies are not able to fill current job vacancies and are not able to consider expansion efforts until vacancies are filled and qualified candidates are available. In other words, work force development, economic growth, retention of youth and the *Drug Problem* are all intertwined.
- An attendee discussed the historical significance of the Punxsutawney airport and added that this positive impact continues to benefit local businesses.
- It was suggested that we attempt to quantify the economic impact of trail development in the Recreation and Tourism Strategy for purposes of emphasizing the connection between trail development and economic development. A recent Trail Feasibility Study conducted in Venango County was noted as a good source of information.

- It was also suggested that the Recreation and Tourism Strategy include a description of other ways (other than dollars spent/generated by users) a regional trail system and new trail development can spur economic development. It was suggested that business and employee recruitment and quality of life benefits be emphasized.
- A concern was raised on how private property owner rights are often overlooked when it comes to trail development. A specific way to address this would be under the Tourism and Recreation Strategy to note that private property owner rights and concerns should be considered when developing a trail. Also, the alignment of new trails should consider public right of ways and/or lands in public ownership.
- Guidance was given that the Tourism and Recreation Strategy should note that hunting/fishing is associated with the outdoor heritage of the County and it should emphasize the value of the state game lands in the County.
- There was some discussion on how to develop a better system of communication between emergency providers, state police and local communities and residents for when an emergency response event occurs on Interstate 80 that requires traffic to be routed through local communities. It was noted by the planners that this issue has been discussed by the North Central Pennsylvania Regional Planning and Development Commission and that there was consideration for the Commission to study this further through their open end consulting agreement and through their planning budget. In summary, it was suggested that the Plan identifies the need for an Emergency Response Communication Strategy.

JEFFERSON COUNTY COMPREHENSIVE PLAN UPDATE

PUBLIC MEETING #2

Wednesday, September 27, 2017 - 6:00 P.M.

Jefferson Place - 155 Main Street, 2nd Floor - Brookville, PA

NAME	ORGANIZATION	ADDRESS	E-mail
Bill Setree	Jefferson County	155 Main Street, 2 nd Floor Brookville, PA 15825	bsetree@jeffersoncountypa.com
Lauralynn York	Freelance Writer Jefferson County Democrat	Big Run PA 15715	LLYWRITER@VERIZON.NET
Thomas Chojnacki	Clarion Univ.	77 OLD HARRIGER RD Brookville, PA. 15825	T.P.chojnacki@eagle.clarion.edu
DANA SHICK	BROOKVILLE BOROUGH	18 WESTERN AVE. STE A BROOKVILLE, PA 15825	brookvillemanager@windstream.net
Jill Rend	BC3 @ Brockway JCPC	1200 Wood St Brockway 15824	jill.martin-rend@BC3.edu
THOMAS TRUNDRICH	SYKESVILLE	109 SHANKER ST SYKESVILLE, PA 15885	TRUNDRICH@AOL.COM
SAL CASSANO	NATIONAL FUEL GAS	ERIE, PA 1100 STATE ST. 16512	scassanos@natfuel.com
Karin Pfingster	PENN Highlands NC	Sunflower Dr. Dubois	kpfingster@phhealthcare.org
Julie Peer	Penn Highlands Brookville	100 Hospital Road, Brk, PA	jpeer@phhealthcare.org
Seth Kerr	CITIZEN		skerr@jeffersoncountypa.com
Alicia Ramsey	CITIZEN	101 Spencer Lane Brk, PA	adramsey027@gmail.com
Mark W. Lazzari	The EADS Group		
Trey Frampton	The EADS Group	Clarion office	tframpton@eadsgrp.com

Public MEETING #3

Jefferson County Comprehensive Plan Update



Come join us to plan for the...

FUTURE OF YOUR COUNTY

WHERE

The Heritage House
4 Sylvania Street
Brookville, PA 15825

WHEN

Wednesday
March 28, 2018
At 6:00 PM



Jefferson County
Pennsylvania

WHAT

The Jefferson County Planning Commission is hosting a Public Meeting to review the planning process focusing on recommendations of the draft Jefferson County Plan Update. The Plan includes an asset-based Recreation and Tourism Infrastructure Strategy and a Strategy focused on Community Infrastructure Improvements.

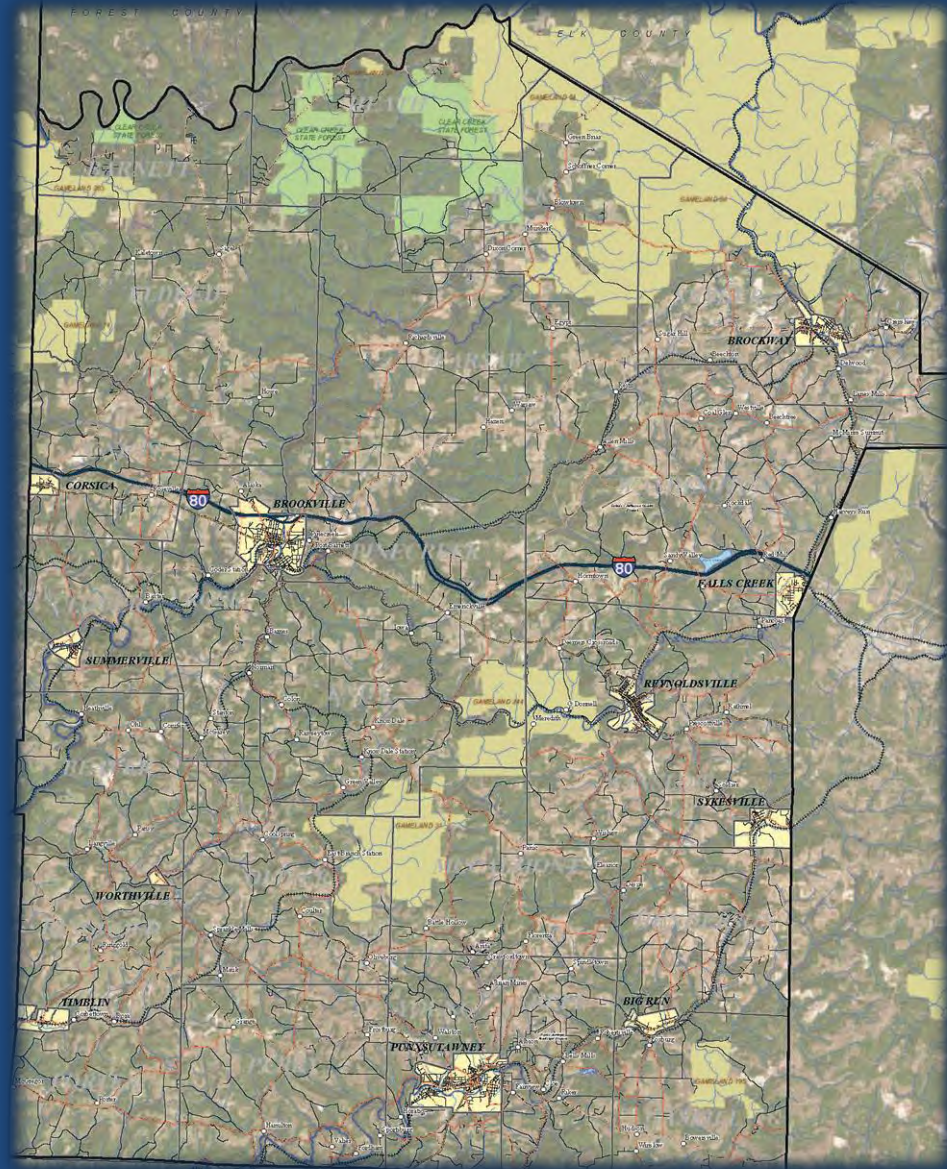
TOPICS

Major findings and recommendations of the Plan along with its implementation approach will be reviewed. The public is encouraged to attend and offer input.

Jefferson County Comprehensive Plan Update

Jefferson County Planning Commission

Public Meeting
March 28, 2018



Jefferson County Comprehensive Plan Update

AGENDA

- **Introductions/Background**
- **Recreation and Tourism Strategy Overview**
- **Community Infrastructure Strategy Overview**
- **Public Discussion**
- **Next Steps**



Jefferson County Comprehensive Plan Update

Why - provides an agenda and framework

How - is enabled by the PA Municipalities Planning Code but has local flexibility and is adaptable:

- **Issues and Results Orientation**
- **Local Asset-Based**
- **Outcomes - Desired and Practical Outcomes**

**Counties are required to update their Plans every 10 years
.... Jefferson is due for an update now**



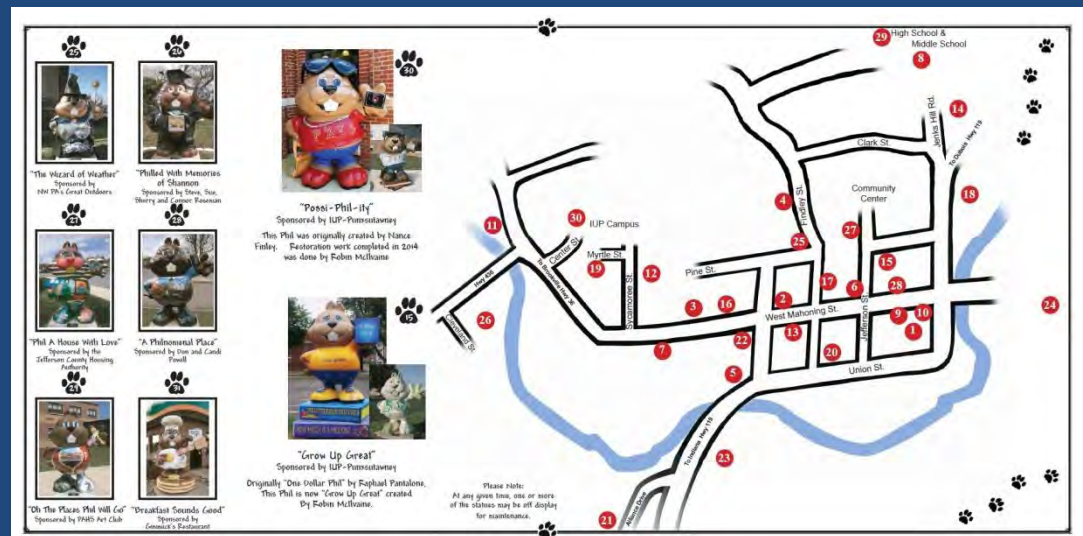
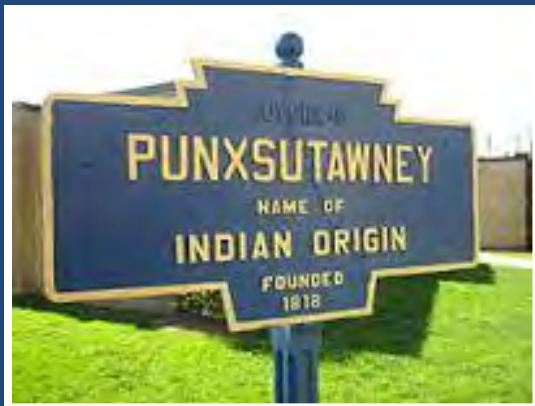
Recreation and Tourism Strategy

Overview

Jefferson County Comprehensive Plan Update

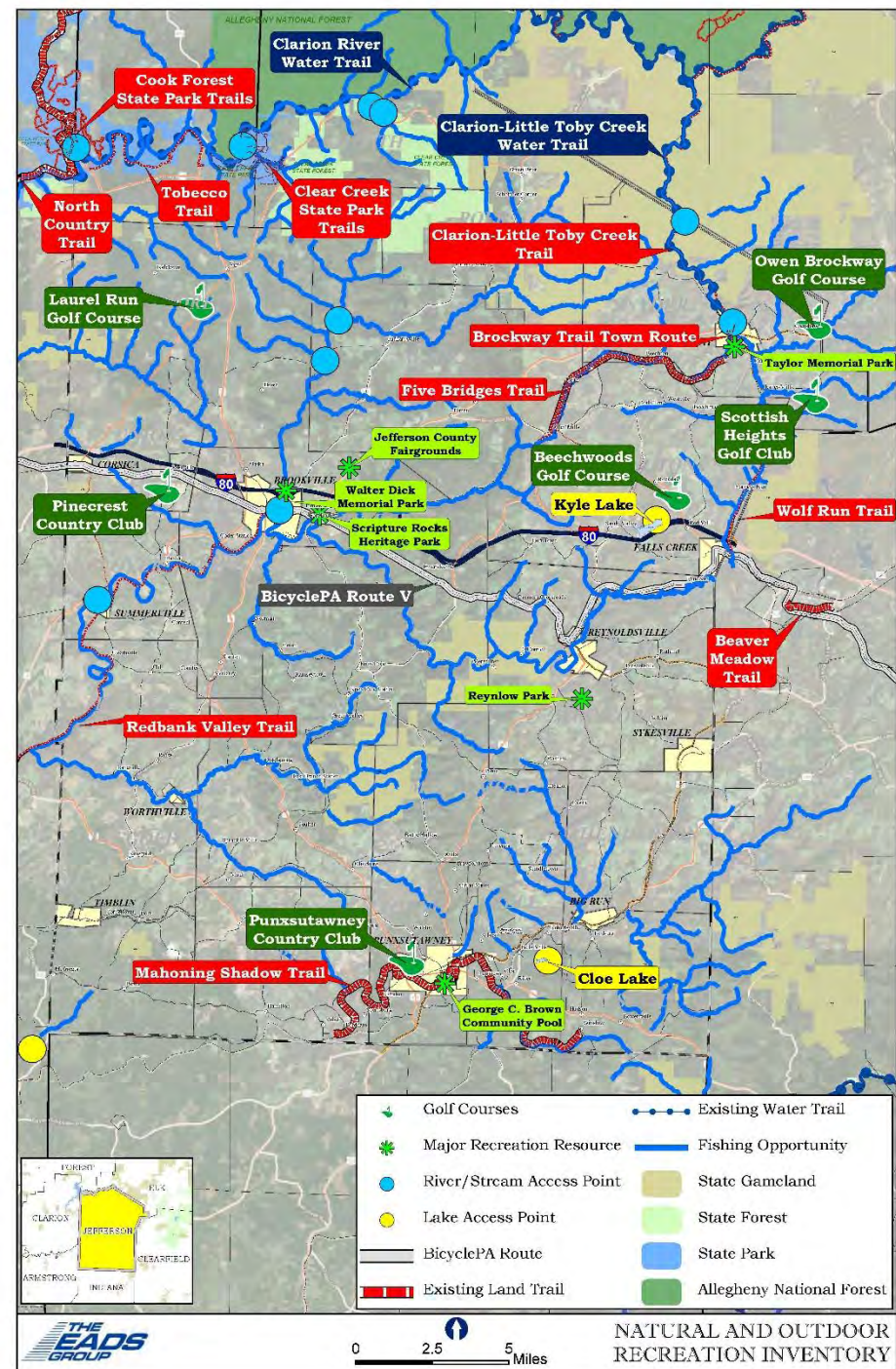
Overview of the Approach –

- Working Group – provided input and guidance
- Strategic Plan Format:
 - Background Analysis – a Tourism and Heritage profile of Jefferson County
 - Synthesis of Information
 - Recommendations/Implementation



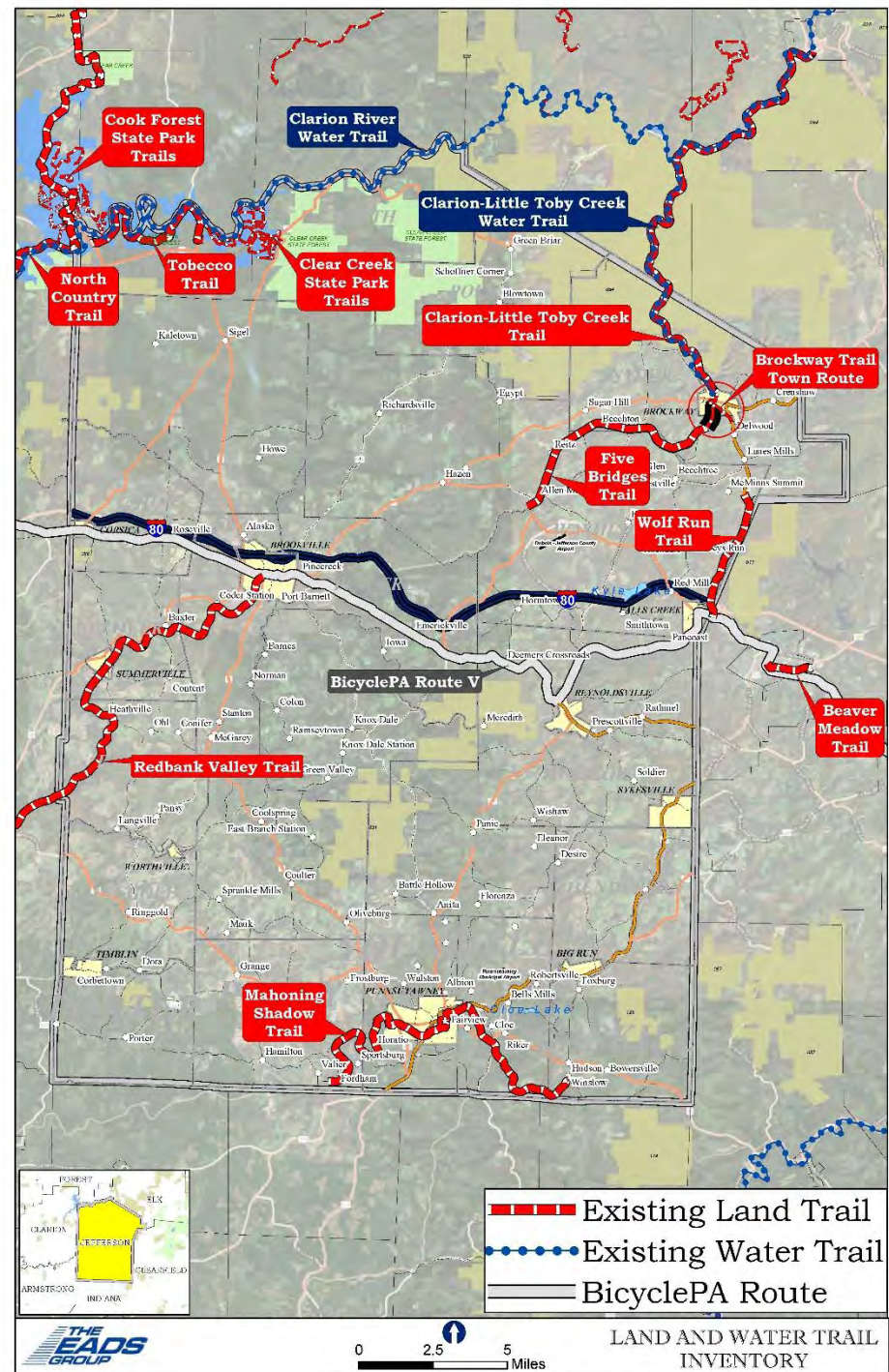
Inventory Natural and Outdoor Recreation Assets ...

- *Golf Courses*
- *Major Recreation Areas*
- *Water Access Points*
- *Fishing Opportunities*
- *State Managed Lands*



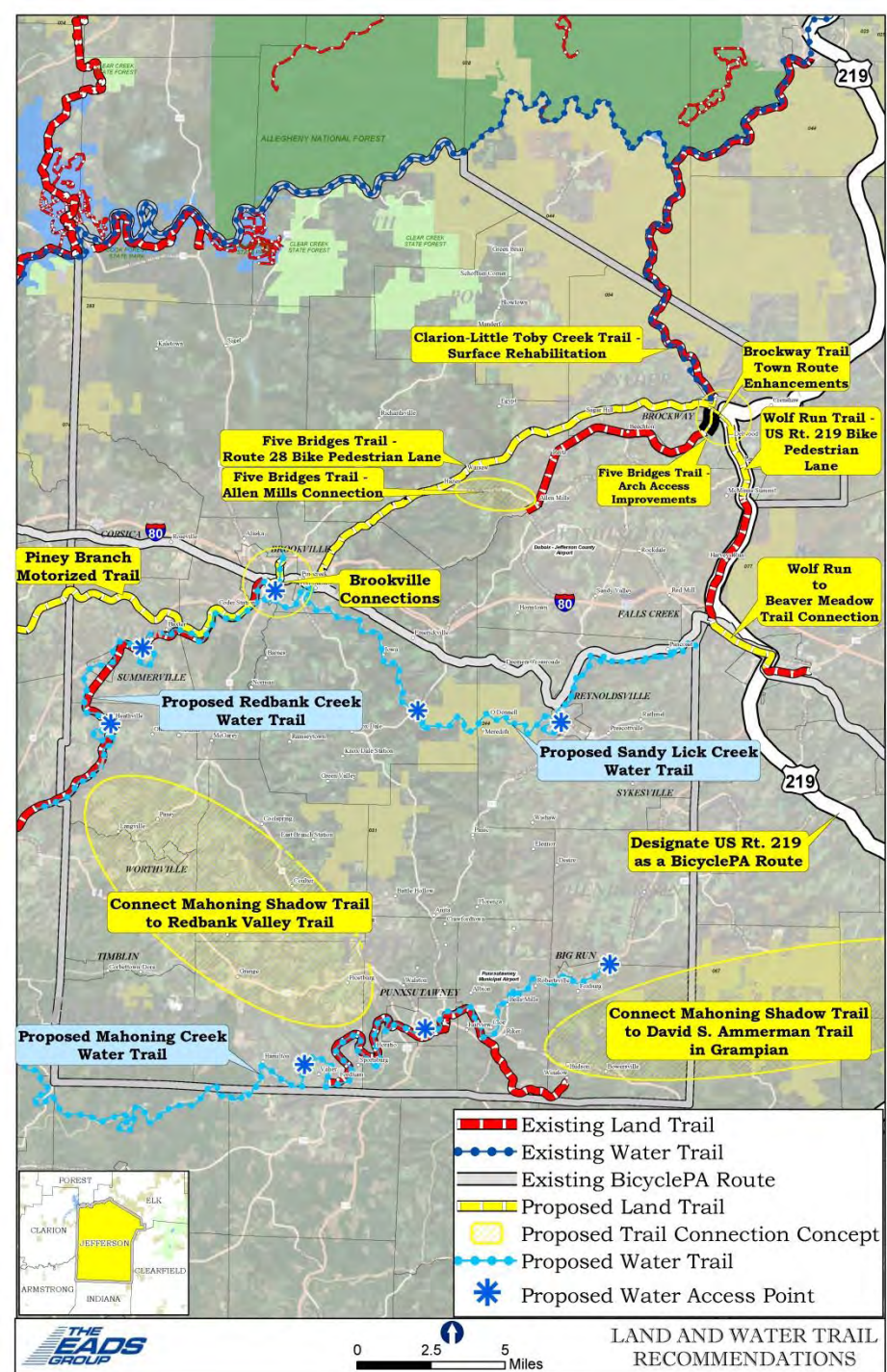
Inventory Natural and Outdoor Recreation Assets ...

- *BicyclePA Routes*
- *Existing Land Trails*
- *Existing Water Trails*

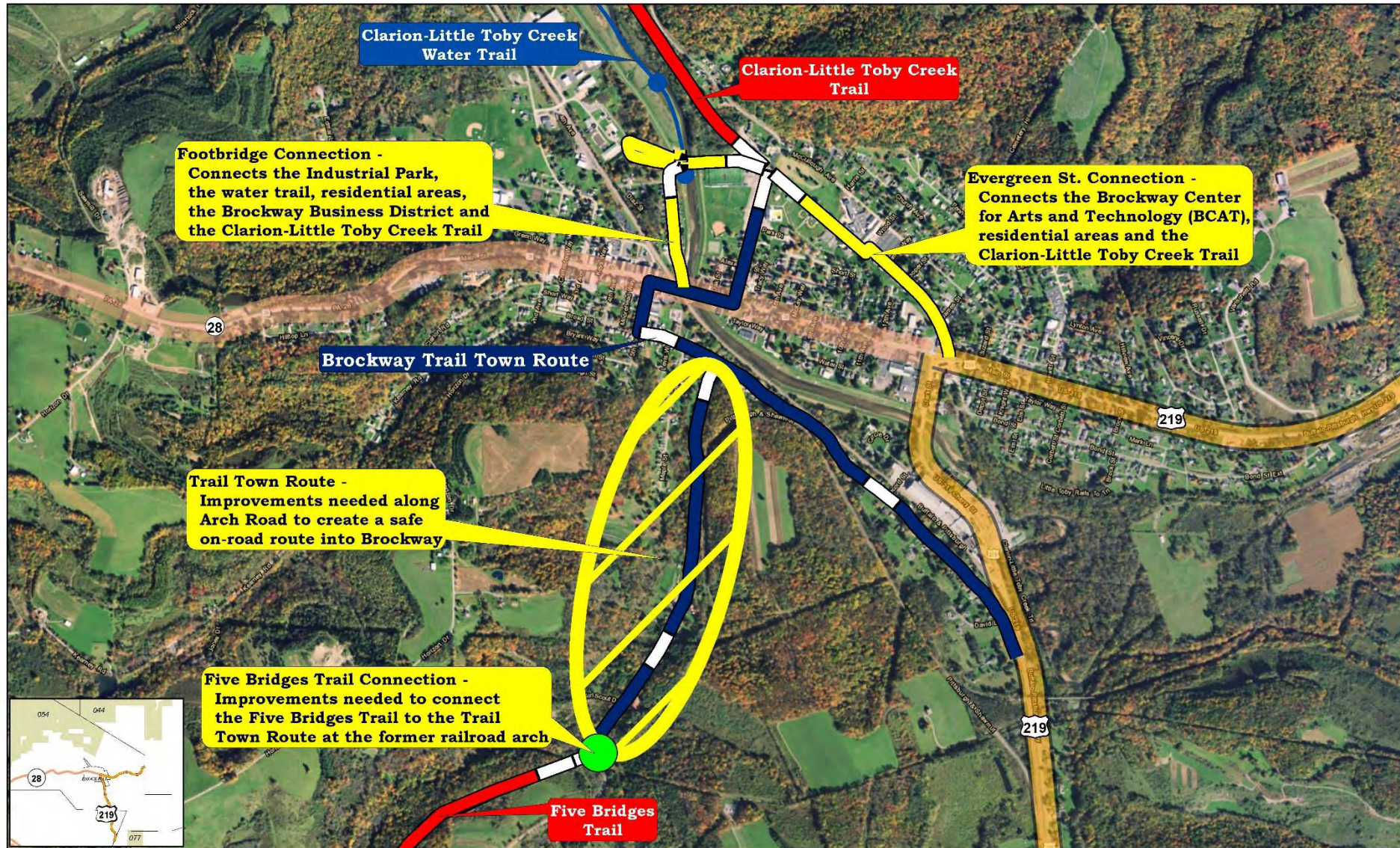


Land and Water Trail Recommendations...

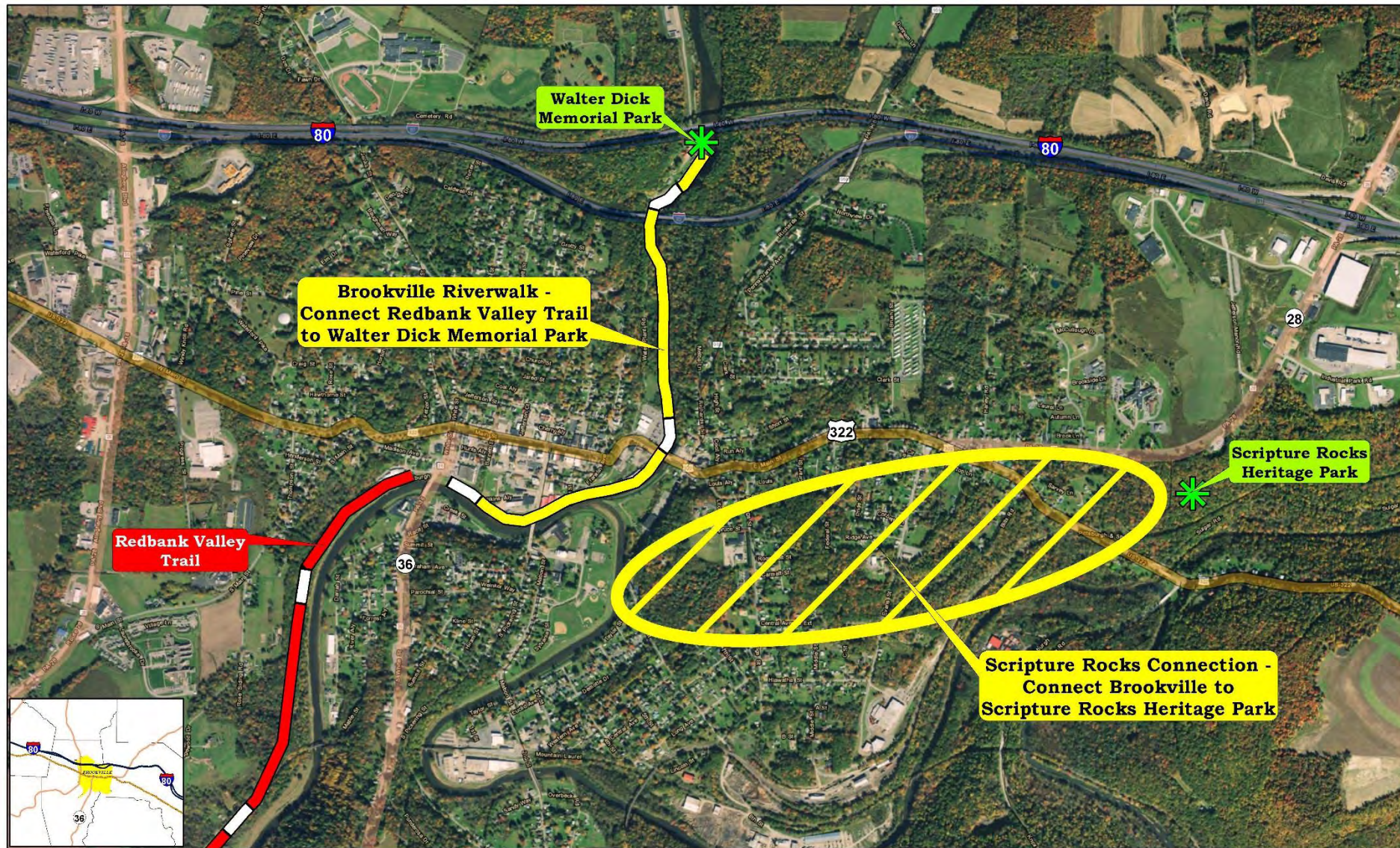
- *Proposed trail projects to reduce gaps*
- *Trail Connection Concepts*
- *Proposed new Water Trails*
- *Proposed Water Access Pts.*



Brockway Local Connections Recommendations...



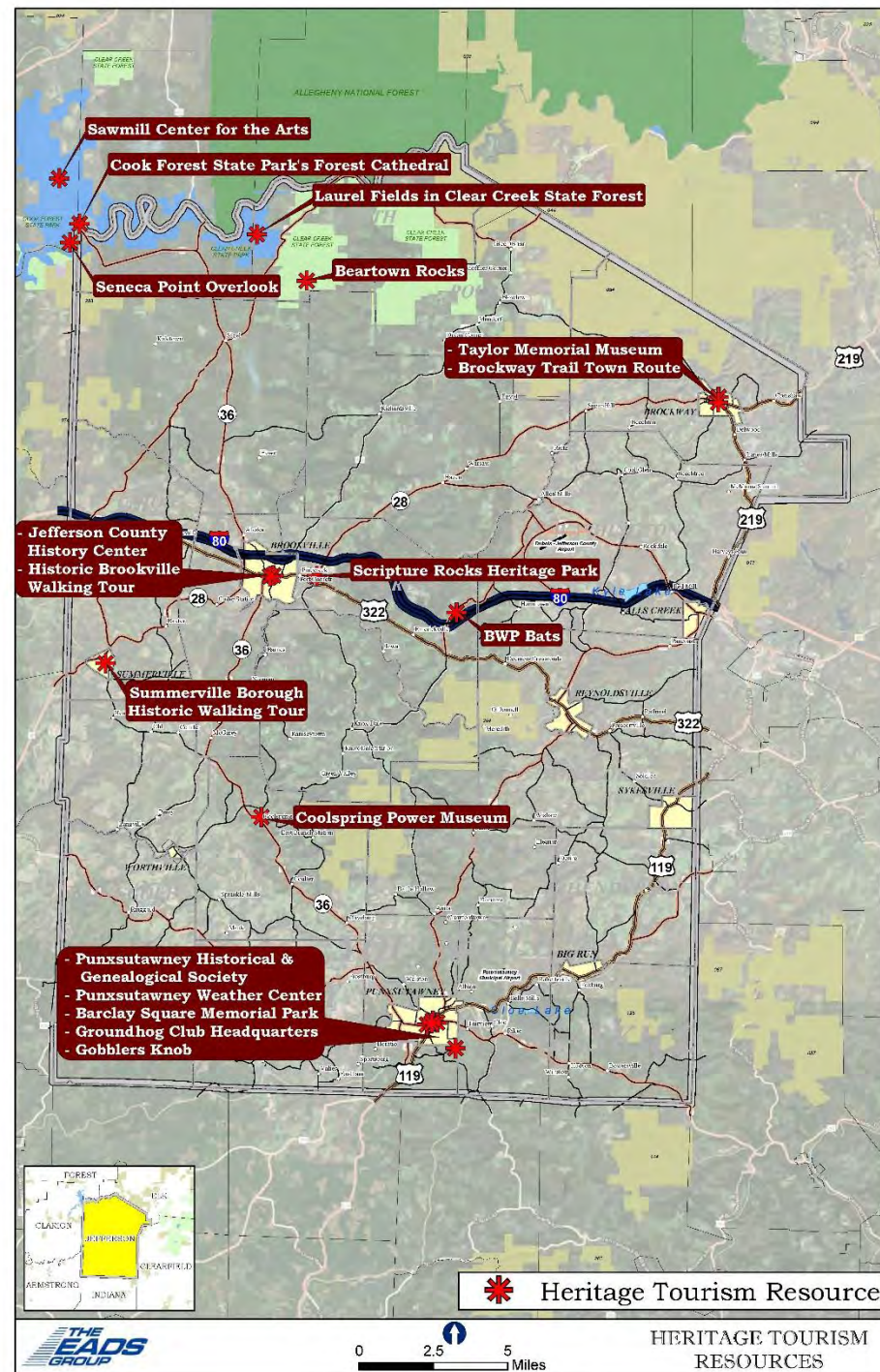
Brookville Local Connections Recommendations...



Inventory Destination Heritage Tourism Resources...

Places, facilities or areas that are open to the public and that can provide an interactive and experienced based opportunity:

- The Taylor Memorial Museum
- Brockway Borough Trail Town Route
- Historic Brookville Walking Tour
- The Jefferson County History Center
- Scripture Rocks Heritage Park
- Punxsutawney Area Resources
- Summerville Borough Historic Walking Tour
- Coolspring Power Museum
- BWP Bats Factory and Tours
- Beartown Rocks
- Seneca Point Overlook
- Laurel Fields in Clear Creek State Forest
- *Forest Cathedral* in *Cook Forest State Park*
- Sawmill Center for the Arts



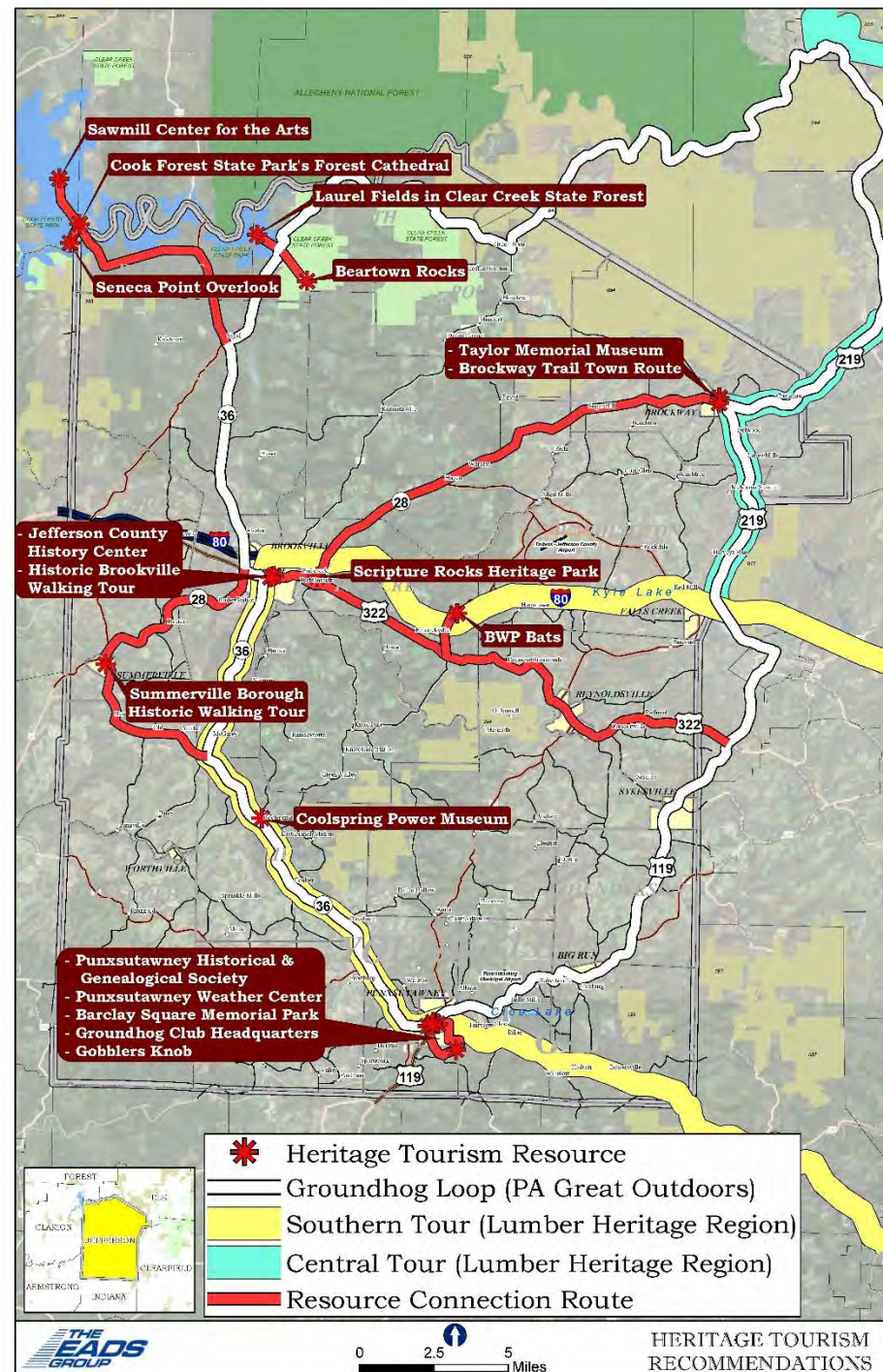
Destination Heritage Tourism Resources Driving Loop Recommendations...

Existing Driving Tours in Jefferson County:

- **Groundhog Loop - PA Great Outdoors Visitors Bureau**
- **Lumber Heritage Region – Central Tour and Southern Tour**

Recommendations:

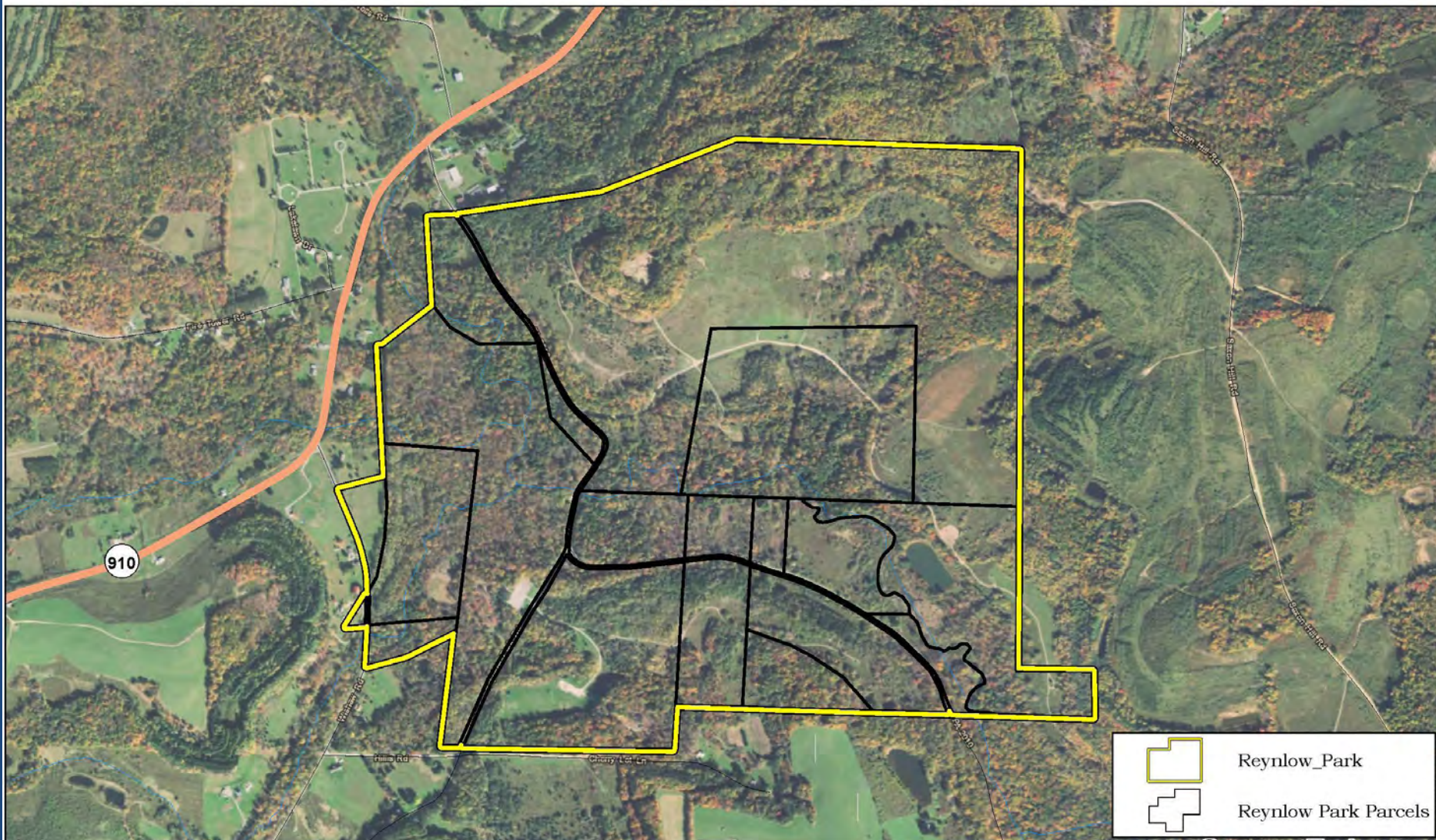
- **Identified Connection Routes (side trips) from Driving Loops to Resources**



Recreation Area Enhancements...

Master Site Development Plan

Recommended for Reynlow Park



Recreation Area Enhancements...

Master Site Development Plan Recommended for Cloe Lake



Community Infrastructure Strategy

Overview

Jefferson County Comprehensive Plan Update

Overview of the Approach –

- **Working Group – provided input and guidance**

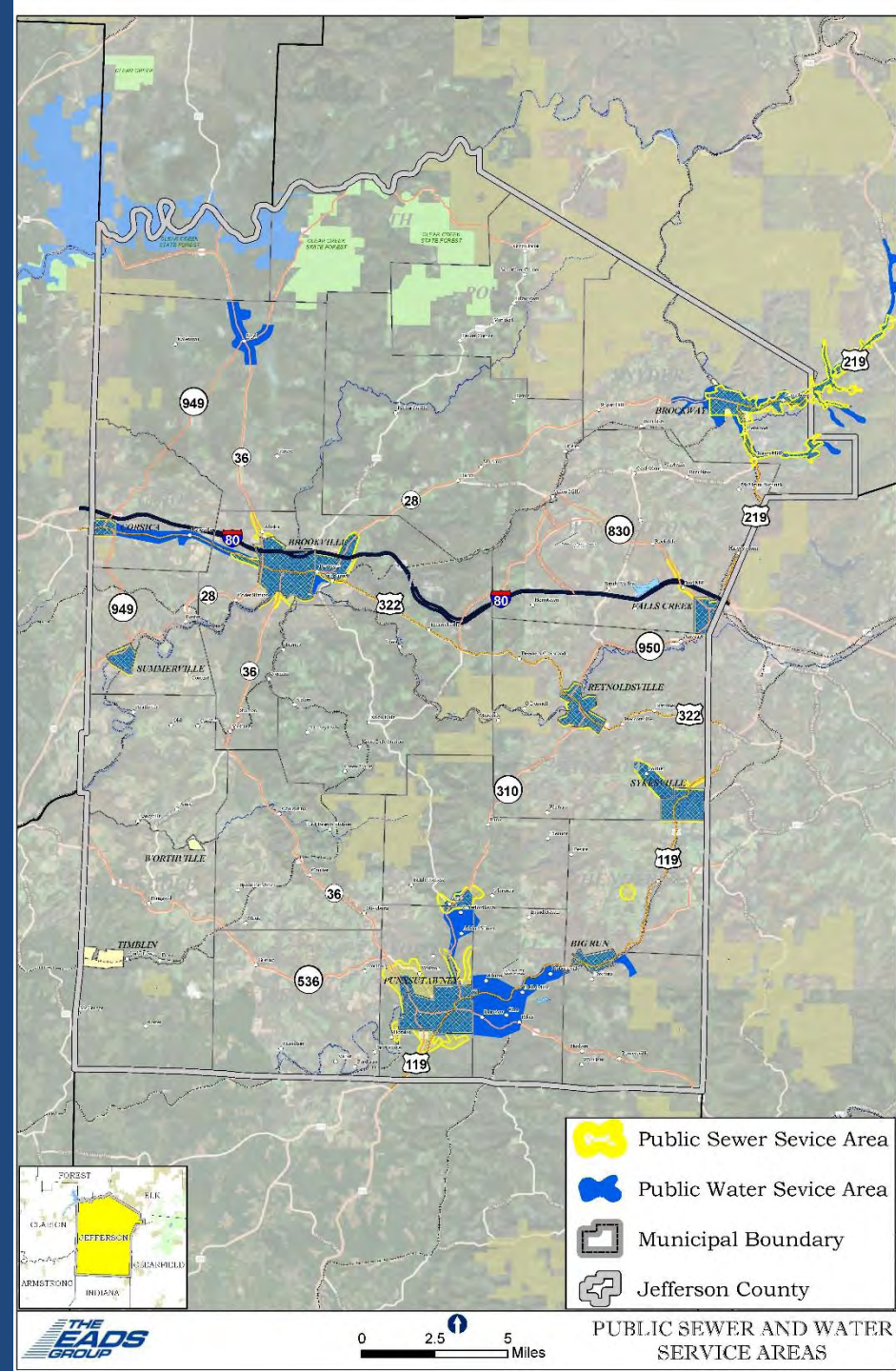
- **Strategic Plan Format:**
 - **Background Analysis – an Infrastructure profile of Jefferson County**
 - **Synthesis of Information**
 - **Recommendations/Implementation**



Inventory Public Sewer and Water Service Areas...

Update Service Area mapping from 2005 Plan:

- ***Brockway/Snyder Township***
- ***Brookville/Corsica area***
- ***Punxsutawney/Big Run***
- ***Falls Creek, Reynoldsville and Sykesville***
- ***DuBois Act 537 Plan – includes system in Falls Creek***



Identify Growth Areas ...

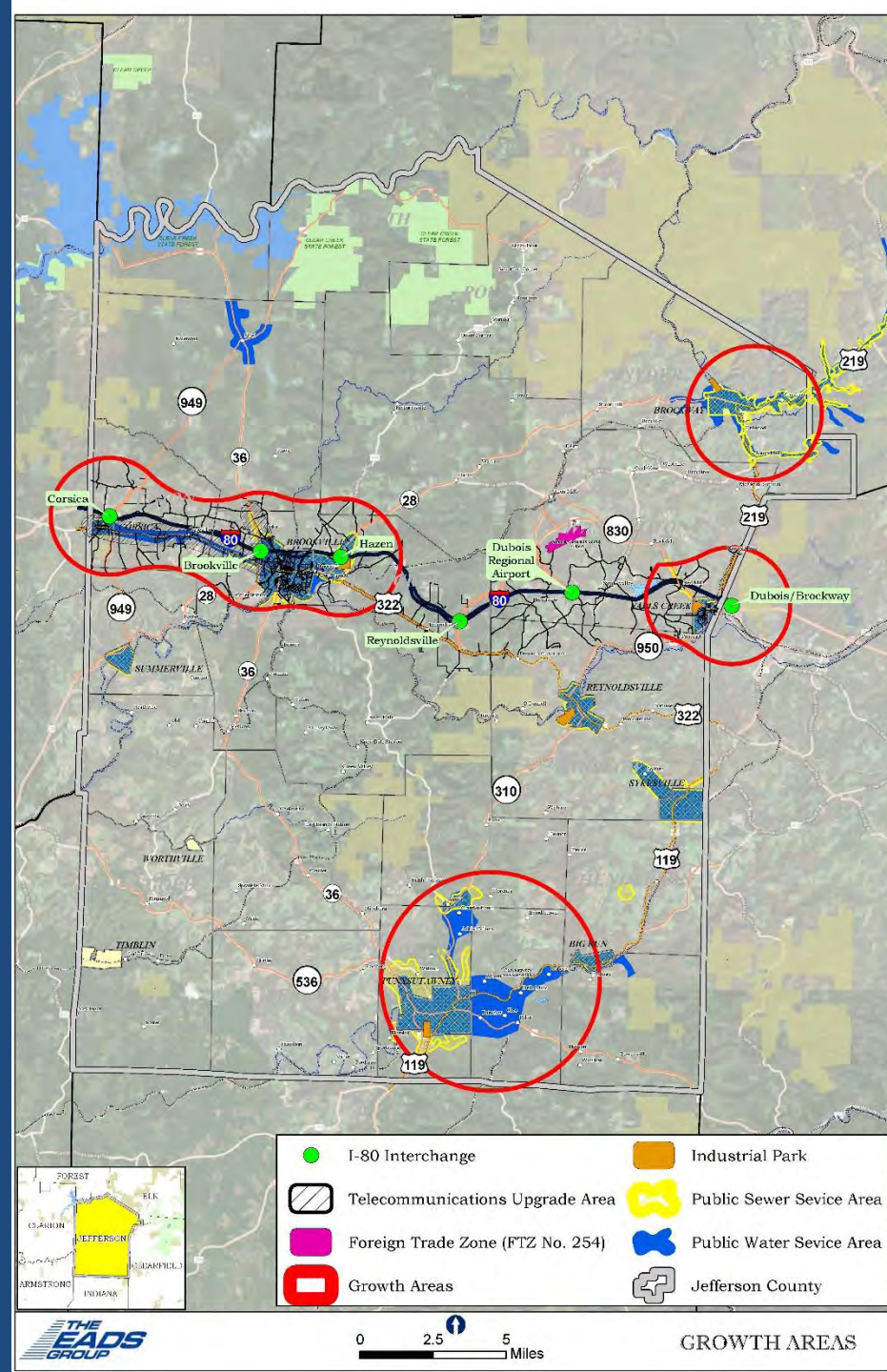
Focus on I-80 Interchanges with existing Sewer and Water and other infrastructure:

- Corsica
- Brookville
- Hazen
- DuBois/Brockway

Developed Areas with existing Sewer and Water and other infrastructure:

- Brockway/Snyder Township
- Punxsutawney/Big Run

Foreign Trade Zone #254

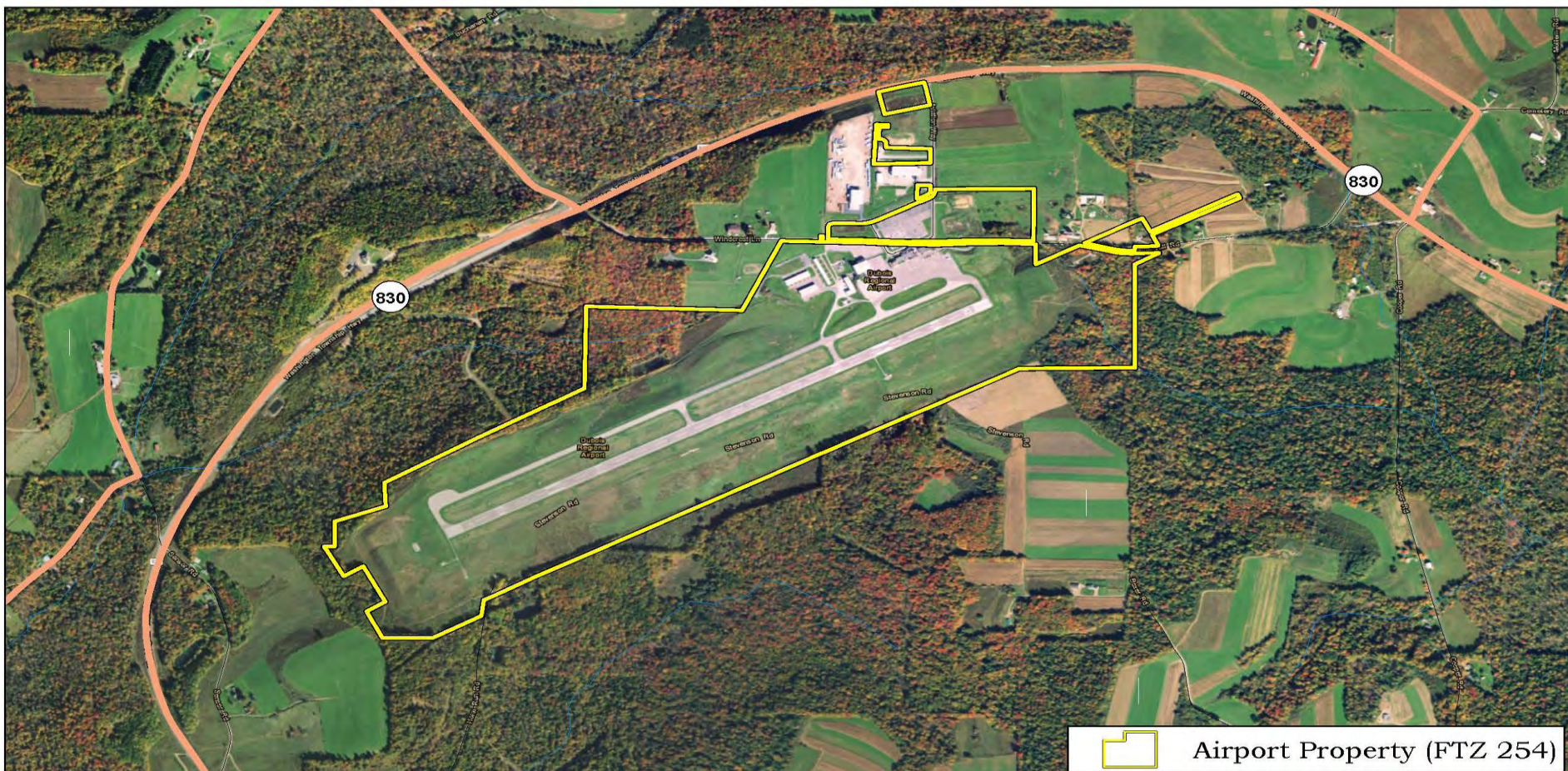


Identify Areas for new Business/Industrial Parks/Development sites with Growth Areas ...

- *Punxsutawney Area (Riker Site)***
- *Brookville Area (near Brookville Area High School)***
- *Brockway Area (G&W Industrial Site, Erie Junction and Clay Plant site)***

Jefferson County Foreign Trade Zone #254 ... located at the DuBois regional Airport -

The Foreign Trade Zone is a designated area where imported goods can be stored or processed without being subject to import duty.



Better Utilize the Jefferson County Foreign Trade Zone (FTZ) #254 ...

Educate the North Central Regional Planning and Development Commission, Jefferson County Planning Commission and Jefferson County Economic Development Council on the technical aspects of operating and administering the Foreign Trade Zone:

- *Direct Consultation with experts on FTZs*
- *Direct Outreach with appropriate businesses and industries*
- *Provide Administrative and Technical support for establishing Subzones as appropriate in the County.*

Emergency Response Communication Strategy...

- *Communications between State Police/First Responders and local communities near I-80*
- *During times when traffic will be diverted through the local community*
- *Example – Brookville has two (2) I-80 interchanges*

Jefferson County Comprehensive Plan Update

Next Steps:

- Obtain and Review Public Input
- Finalize the Draft Strategies
- County is completing other sections of the Plan
- MPC required 45-day Public Review Period
- Conduct Public Hearing
- County Adoption

Jefferson County Comprehensive Plan Update



THANK YOU!

Jefferson County Planning Commission



Jefferson County Comprehensive Plan Update
Public Meeting
March 28, 2018

The MPC required Public Meeting for the Jefferson County Comprehensive Plan update was held on this date at 6:00 PM at the Heritage House in Brookville. The meeting was introduced by Brad Lashinsky and Bill Setree representing the Planning Commission who is guiding this planning process. Six (6) persons signed the attendance sheet. Mr. Mark W. Lazzari and Tracy Frampton of The EADS Group also attended and facilitated the meeting. A brief introduction of the focused planning approach being used to develop the two (2) issues-oriented and implementable Strategies was given. The Meeting then focused on reviewing the recommendations of the Recreation and Tourism Strategy and the Community Infrastructure Strategy. Opportunity for public engagement and feedback was also provided. The following highlights the key comments, input and guidance provided by attendees.

- Commissioner Jack Matson asked how the he could best promote and implement plan. The EADS Group planners suggested preparing a concise executive summary that he and the other the Commissioners and others could use to promote the Plan recommendations. The planners further noted that through adoption of the Plan, the Commissioners would then have the ability to assert oversight onto the implementation process and could direct County resources to assist the Planning Commission and local organizations resolve impediments and to otherwise work together to implement the recommendations.
- Commissioner Jack Matson also asked how various organizations could be engaged and brought together to collectively work on implementation. Brad Lashinsky responded saying that the County Planning Commission would take on the role of being the implementation committee and would invite different groups and organizations to attend the Planning Commission meetings and that the meetings could take on a workshop style. Mr. Lashinsky also noted that taking on this role would provide the Planning Commission with a more missioned focus role within the County.
- Mr. Brad Lashinsky added that information from the Nature Based and Outdoor Recreation Inventory and Map and the Destination Heritage Resources Inventory and Map will be incorporated into Economic development and other recruitment modules produced by Localintel.
- An attendee suggested that reference to the North Central Greenways Plan be made in the plan as appropriate.

Public Hearing Notice

The Jefferson County Planning Commission is conducting a Public Hearing on behalf of the Jefferson County Commissioners for the *Jefferson County Comprehensive Plan update*. The Hearing will be held on Tuesday, June 26, 2018 at 5:00 PM in the Jefferson Place 2nd Floor Conference Room, 155 Main Street, Brookville, PA 15825. The Hearing is being conducted to inform the public on the major findings and recommendations of the Recreation and Tourism, and Community Infrastructure Strategies prepared for the *Jefferson County Comprehensive Plan update*. The planning process considered issues of local interest and importance to Jefferson County, its municipalities and ultimately its residents. Overall, the Strategies include implementable and asset-based recommendations focused on Recreation and Tourism and Community Infrastructure Improvements in Jefferson County. The public is cordially invited to attend and offer input.

Public Hearing - June 26, 2018



**Jefferson County
Planning Commission**



**Jefferson County
Comprehensive Plan Update - 2018**

Jefferson County Comprehensive Plan Update

AGENDA

- Introductions
- The Plan - Overviews
- Public Discussion
- Next Steps

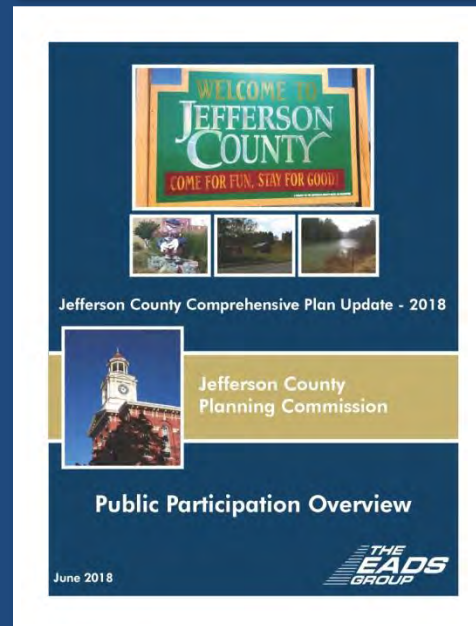
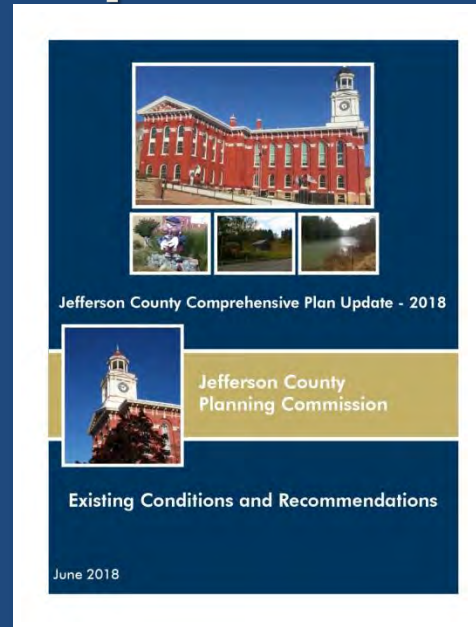


Jefferson County Comprehensive Plan Update

The Plan....

Four (4) stand alone, but connected, documents:

- Existing Conditions and Recommendations
- Public Participation Overview
- Community Infrastructure Strategy
- Recreation and Tourism Strategy



Existing Conditions and Recommendations

Overview

Jefferson County Comprehensive Plan Update

Existing Conditions...

- Population and Demographics
- Natural Resources
- Housing, Transportation and Land Use
- Economic Development
- Community Facilities and Utilities



Public Participation

Overview

Jefferson County Comprehensive Plan Update Stakeholder Participation...

- Public Meeting #1 - March 22, 2017
- Public Meeting #2 - September 27, 2017
- MPC Public Meeting - March 28, 2018
- MPC Public Hearing - June 26, 2018
- Community Survey - 238 responses
- Planning Commission and Working Group Meetings

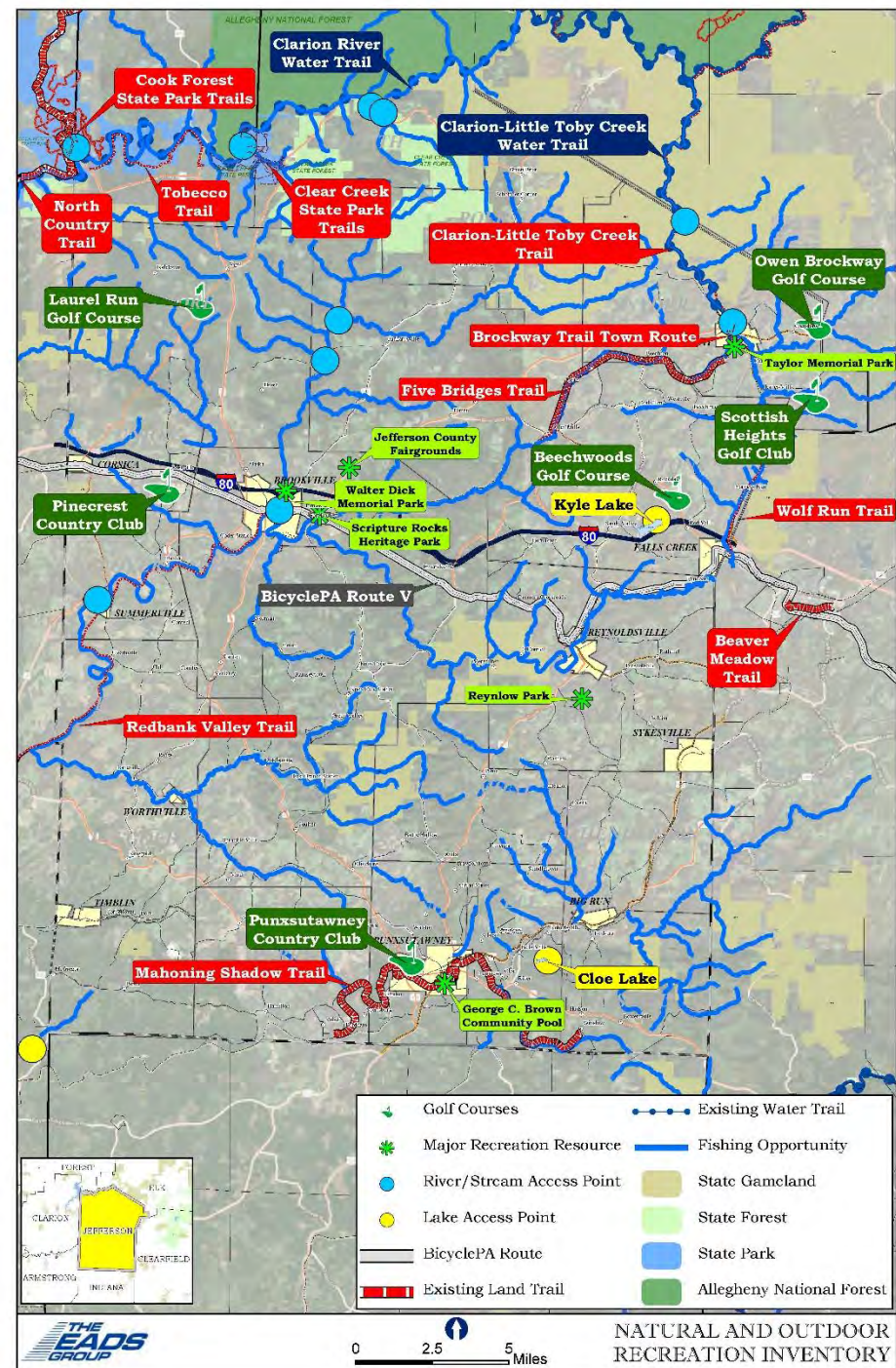


Recreation and Tourism Strategy

Overview

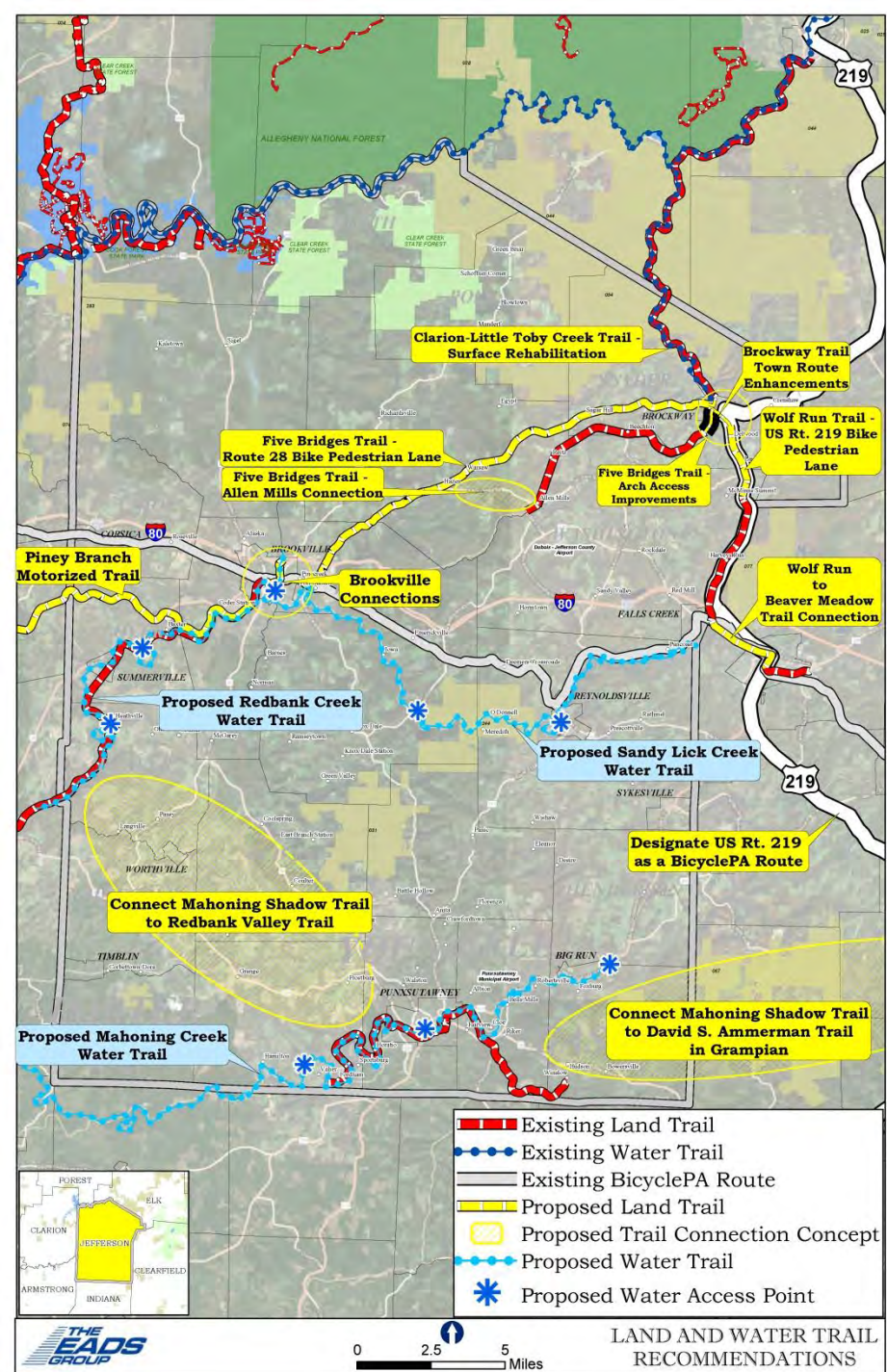
Inventories of Natural and Outdoor Recreation Assets ...

- *Golf Courses*
- *Major Recreation Areas*
- *Water Access Points*
- *Fishing Opportunities*
- *State Managed Lands*
- *Existing Land Trails*
- *Existing Water Trails*

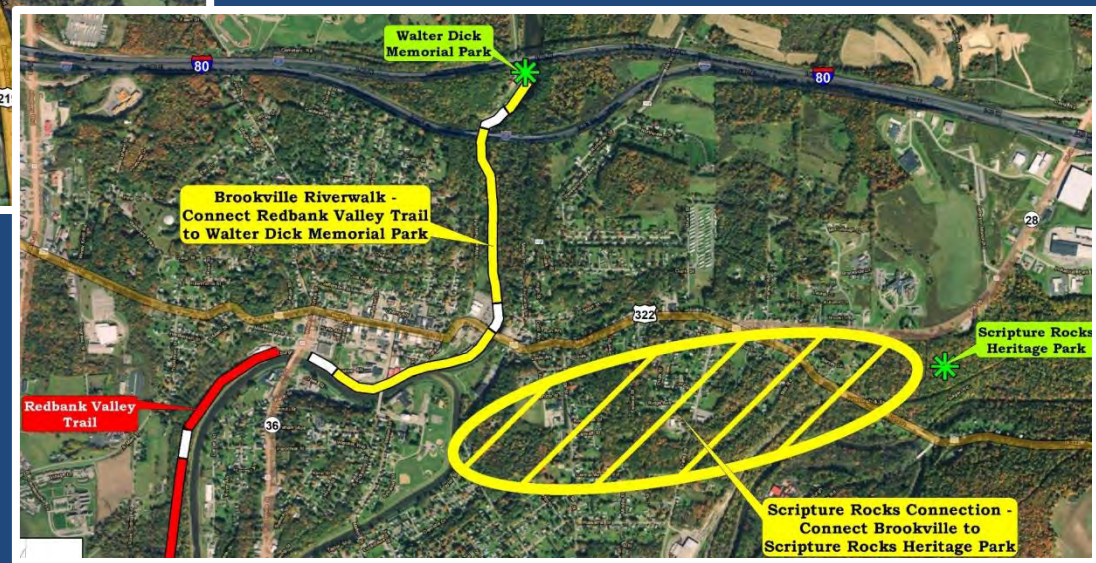
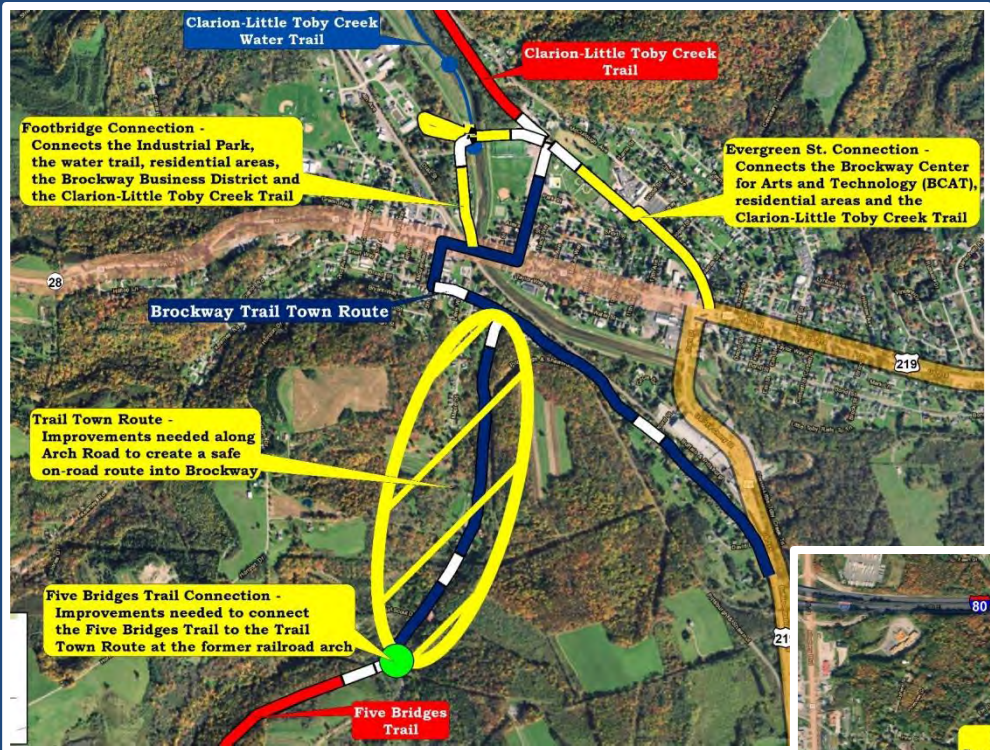


Land and Water Trail Recommendations...

- *Proposed trail projects to reduce gaps*
- *Trail Connection Concepts*
- *Proposed new Water Trails*
- *Proposed Water Access Pts.*

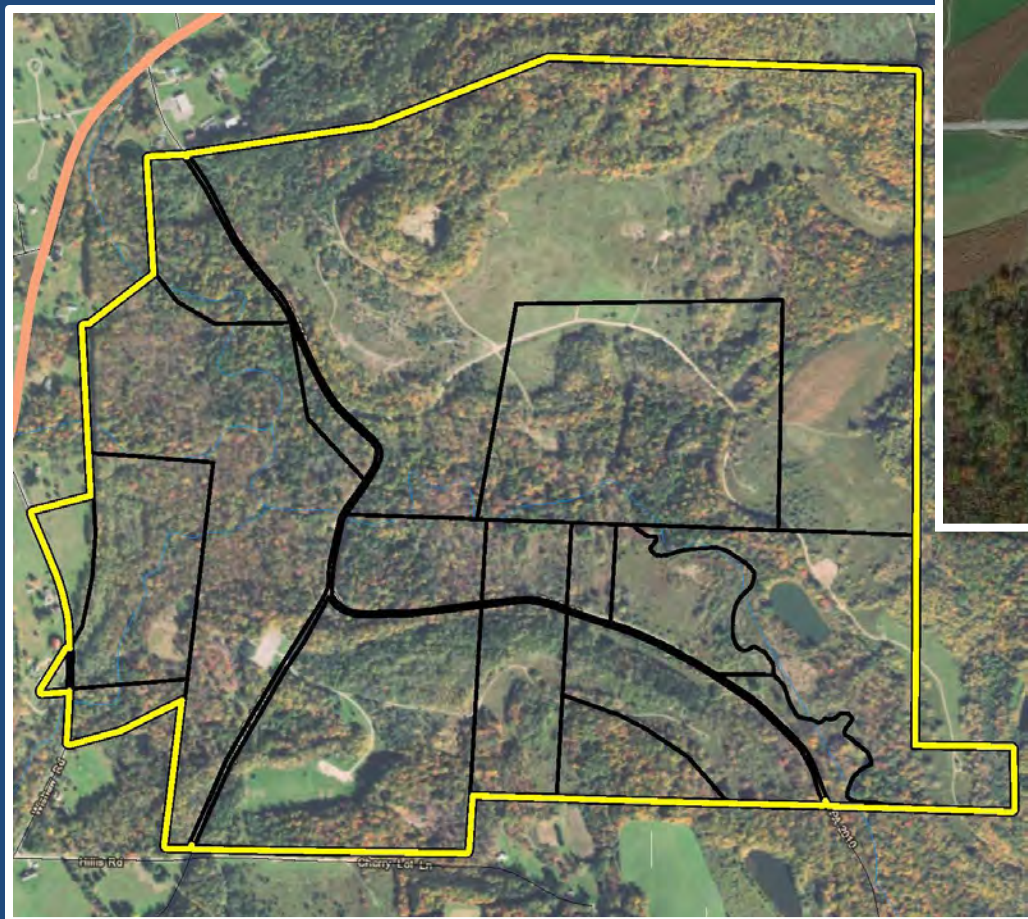


Brookville and Brockway Local Connections....



Recreation Area Enhancements...

at Reynlow Park and Cloe Lake



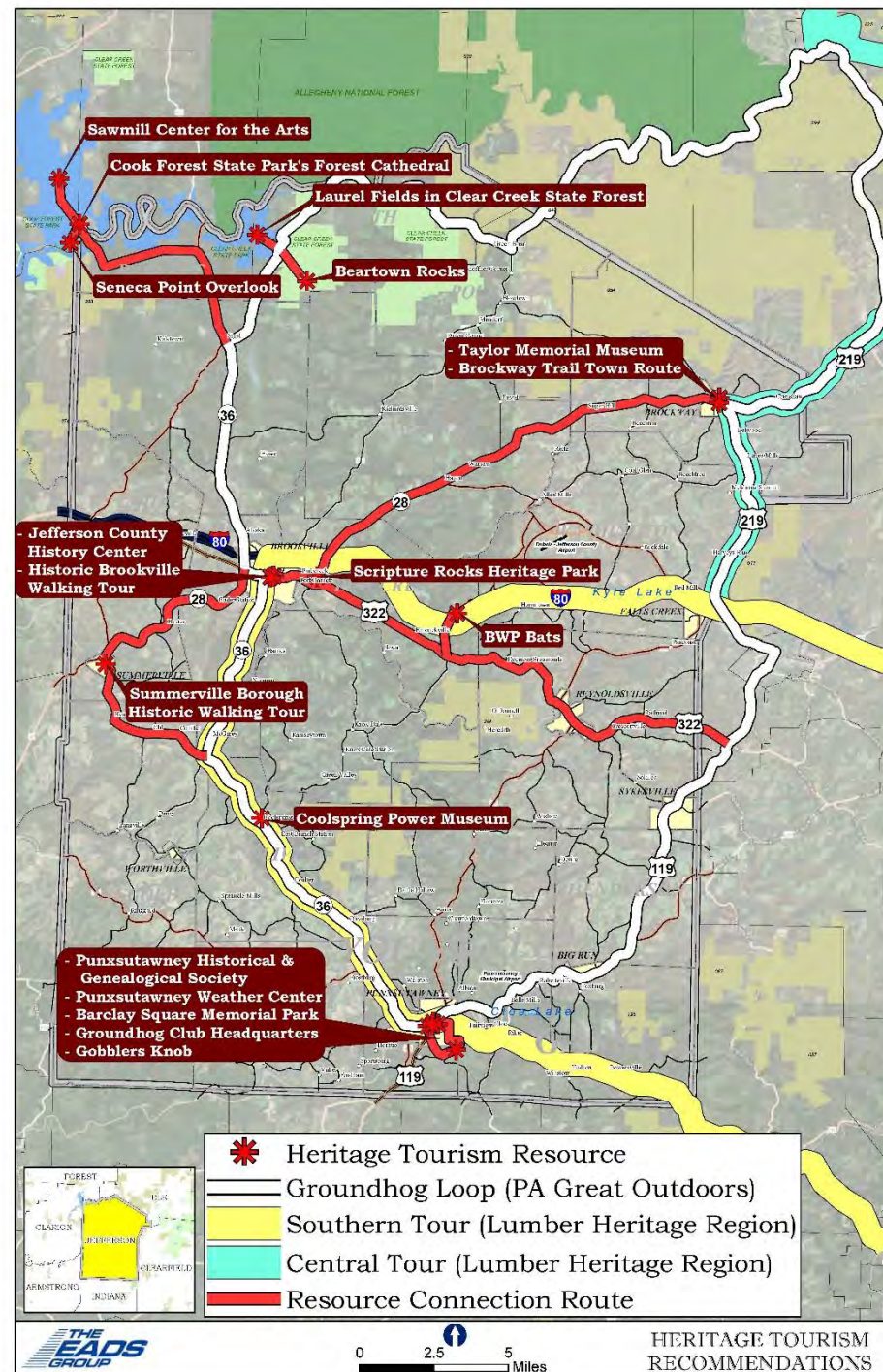
Destination Heritage Tourism Resources Driving Loop Recommendations...

Existing Driving Tours in Jefferson County:

- **Groundhog Loop - PA Great Outdoors Visitors Bureau**
- **Lumber Heritage Region – Central Tour and Southern Tour**

Recommendations:

- **Identified Connection Routes (side trips) from Driving Loops to Resources**



Community Infrastructure Strategy

Overview

Identify Growth Areas ...

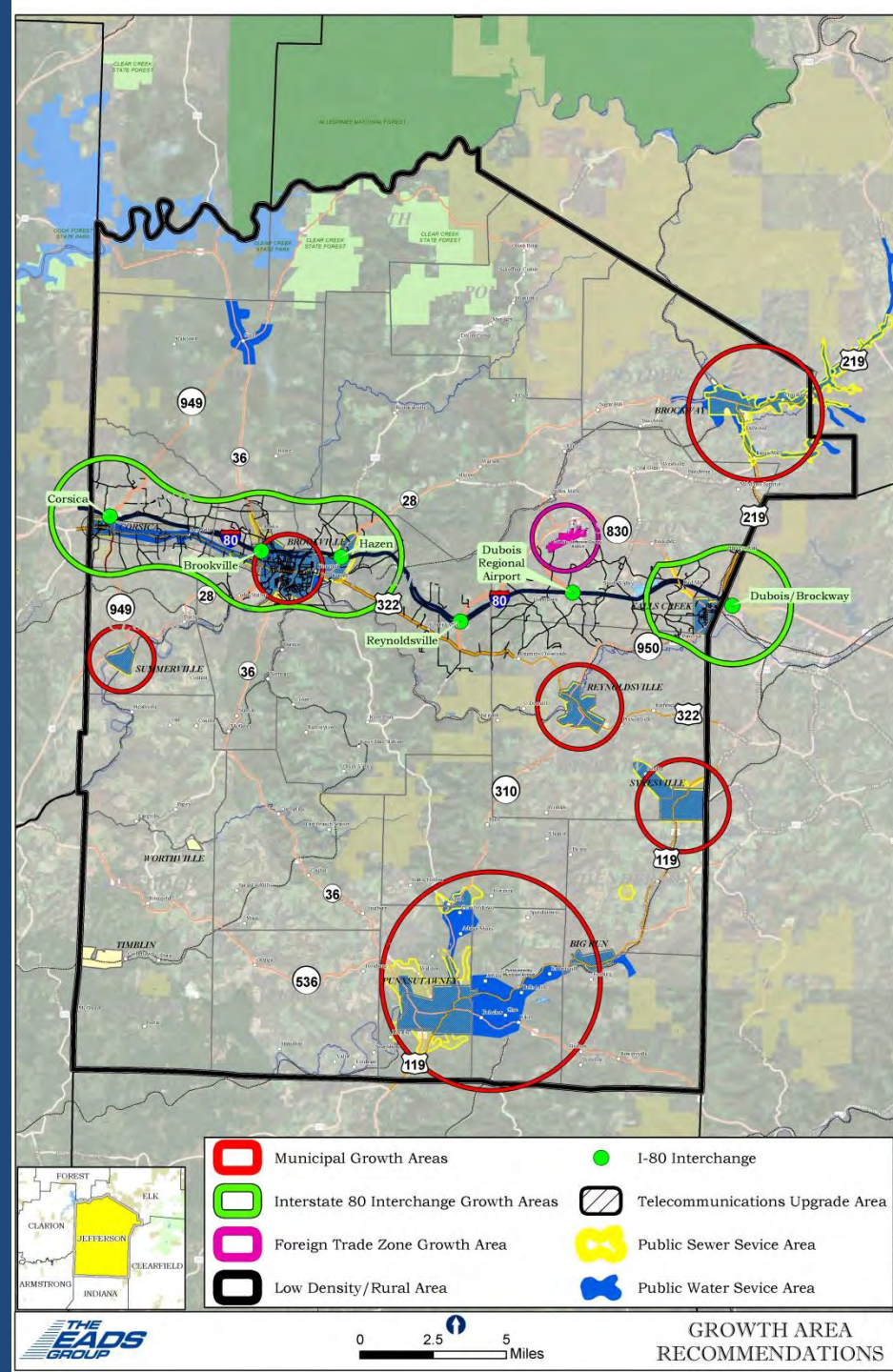
Focus on I-80 Interchanges with existing Sewer and Water and other infrastructure:

- Corsica
- Brookville
- Hazen
- DuBois/Brockway

Developed Areas with existing Sewer and Water and other infrastructure:

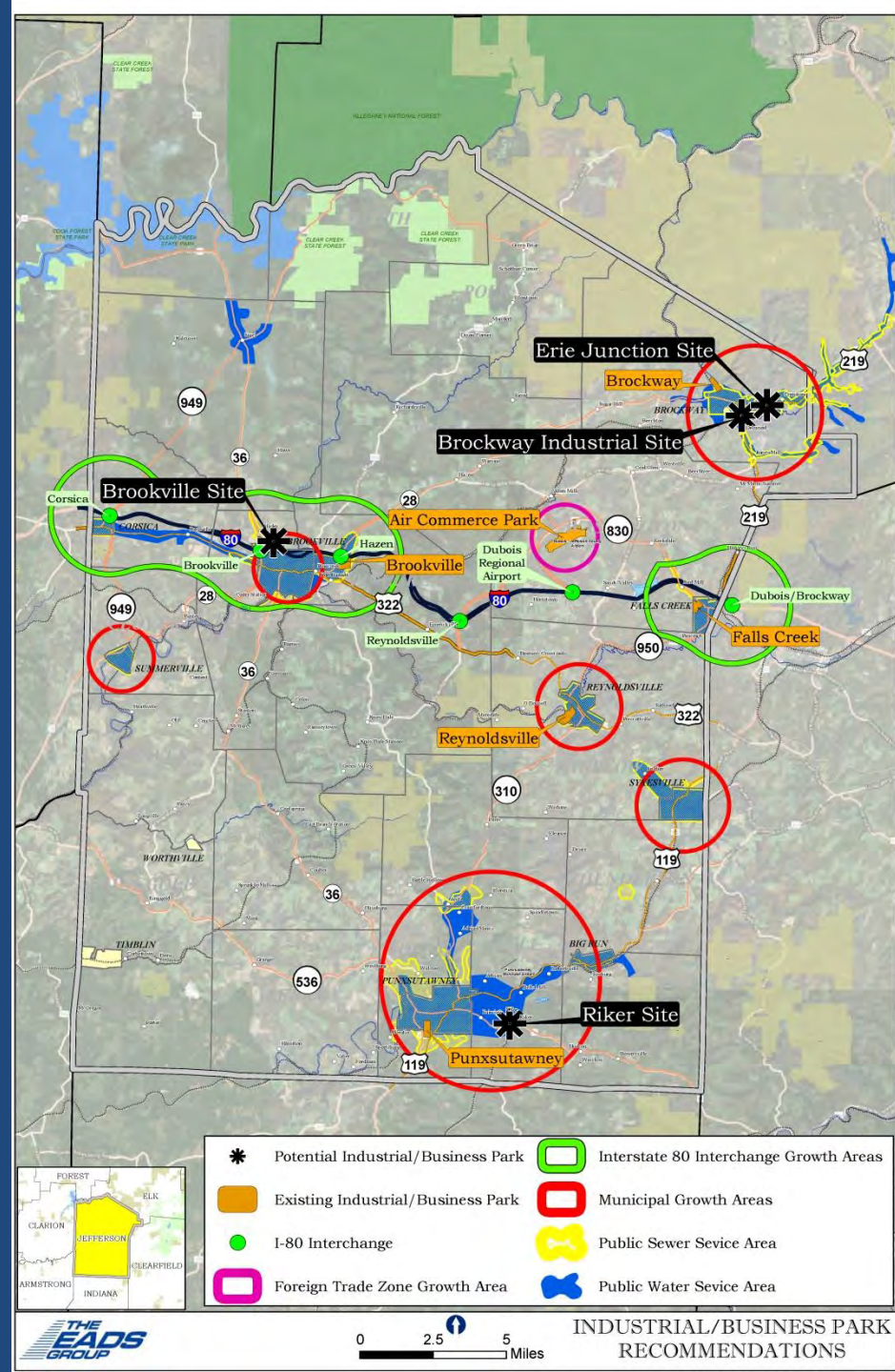
- Brockway/Snyder Township
- Punxsutawney/Big Run

Foreign Trade Zone #254



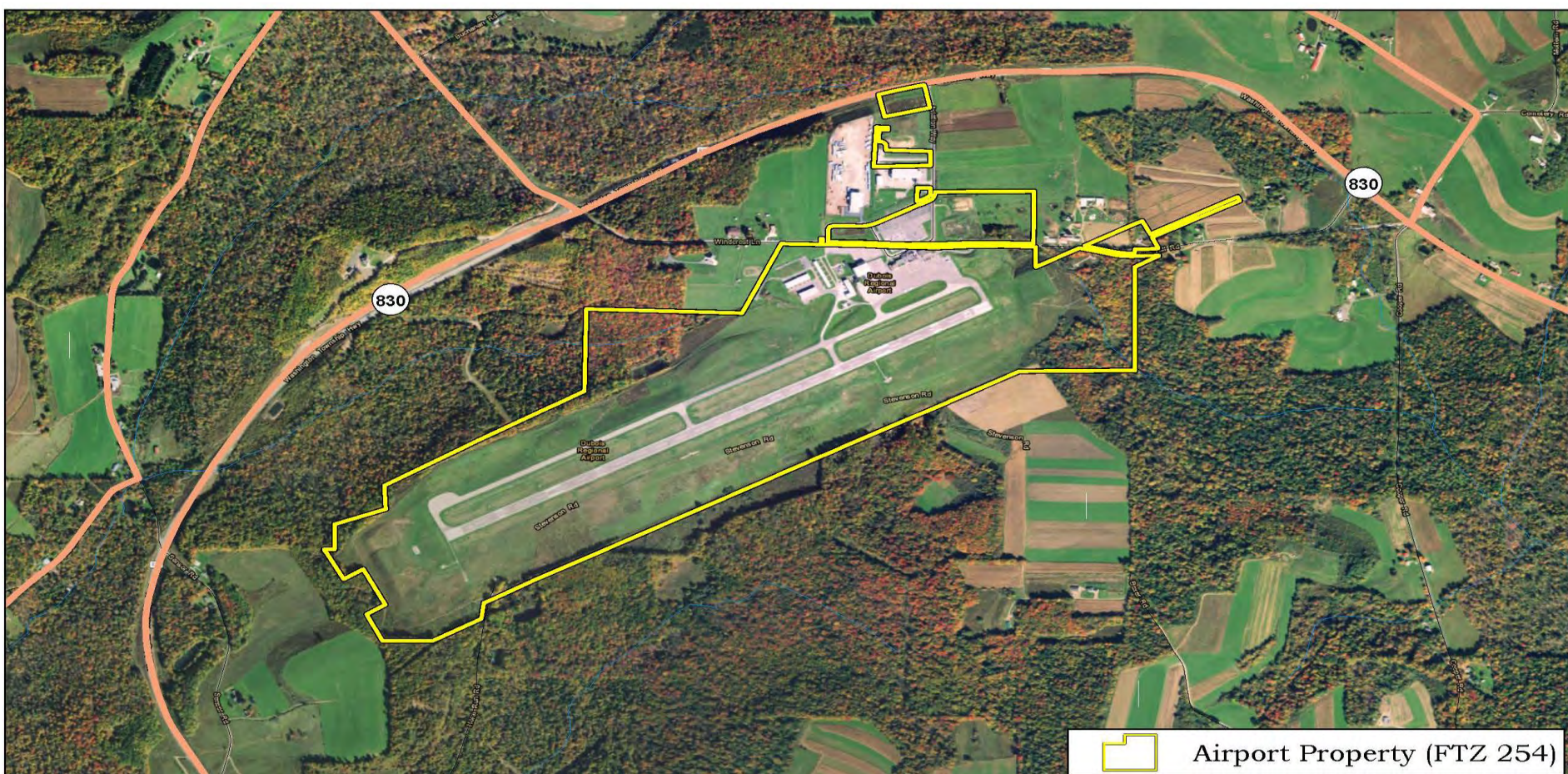
Identify Areas for new Business /Industrial Parks/ Development sites ...

- ***Punxsutawney Area (Riker Site)***
- ***Brookville Area (near Brookville Area High School)***
- ***Brockway Area (G&W Industrial Site, Erie Junction and Clay Plant site)***



Jefferson County Foreign Trade Zone #254 ... located at the DuBois Regional Airport -

The Foreign Trade Zone is a designated area where imported goods can be stored or processed without being subject to import duty.



Emergency Response Communication Strategy...

- *Communications between State Police/First Responders and local communities near I-80*
- *During times when traffic will be diverted through the local community*
- *Example – Brookville has two (2) I-80 interchanges*

MPC Public Meeting Comments on Implementation.....

- **How can the County promote and implement the Plan.**

by adopting the Plan the County has the ability to oversee the implementation process and can directly assist local organizations resolve impediments.

- **How can various organizations be engaged to collectively work on implementation.**

the County Planning Commission can take on the role of being the implementation committee and can invite organizations to their meetings.



Jefferson County Comprehensive Plan Update

Next Steps:

- **Finalize Plan Documents**
- **County Adoption – Anticipated on July 11, 2018.**

Jefferson County Comprehensive Plan Update



THANK YOU!

Jefferson County Planning Commission

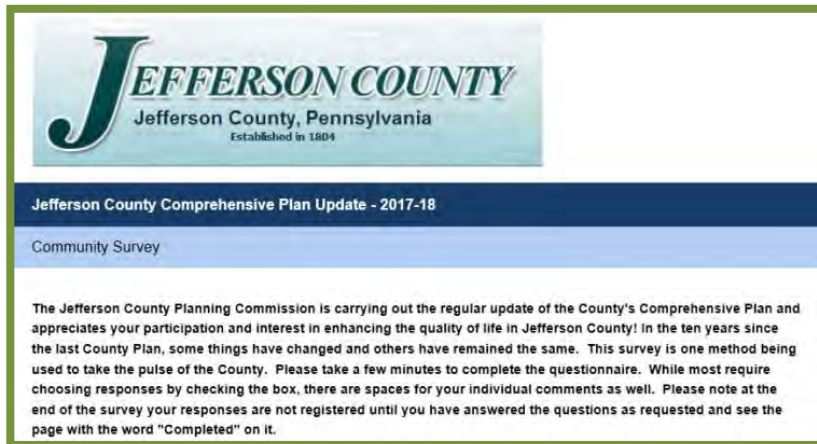


Jefferson County Comprehensive Plan Update Community Survey Results Summary

The Survey

A questionnaire was prepared in coordination with the Jefferson County Planning Commission as a means of eliciting input and perceptions of Jefferson County residents during the spring/summer of 2017.

After discussion and review, a final questionnaire emerged that elicited feedback on the following:



- Subjective feelings and perceptions on what people like about the County;
- Subjective feelings and perceptions about the quality of life in Jefferson County;
- Perceptions on major issues and problems facing the County;
- Perceptions on community facilities, services and utilities
- Perceptions on desired businesses, services and community facilities in the future;
- Perceptions on growth and development; and
- Perceptions on developmental regulations
- Other comments regarding the County were accepted.

Provisions were made for the administration of the survey via *SurveyMonkey* and in hard copy format as well, particularly for those residents lacking internet access or computer skills. The link to the electronic version of the survey was provided on the Jefferson County website. Hard copies of the survey were made available at Public Meeting No.1 and at various municipal locations. The returned hard copy results were merged in with the on-line responses. Overall, a total of 238 responses were received.

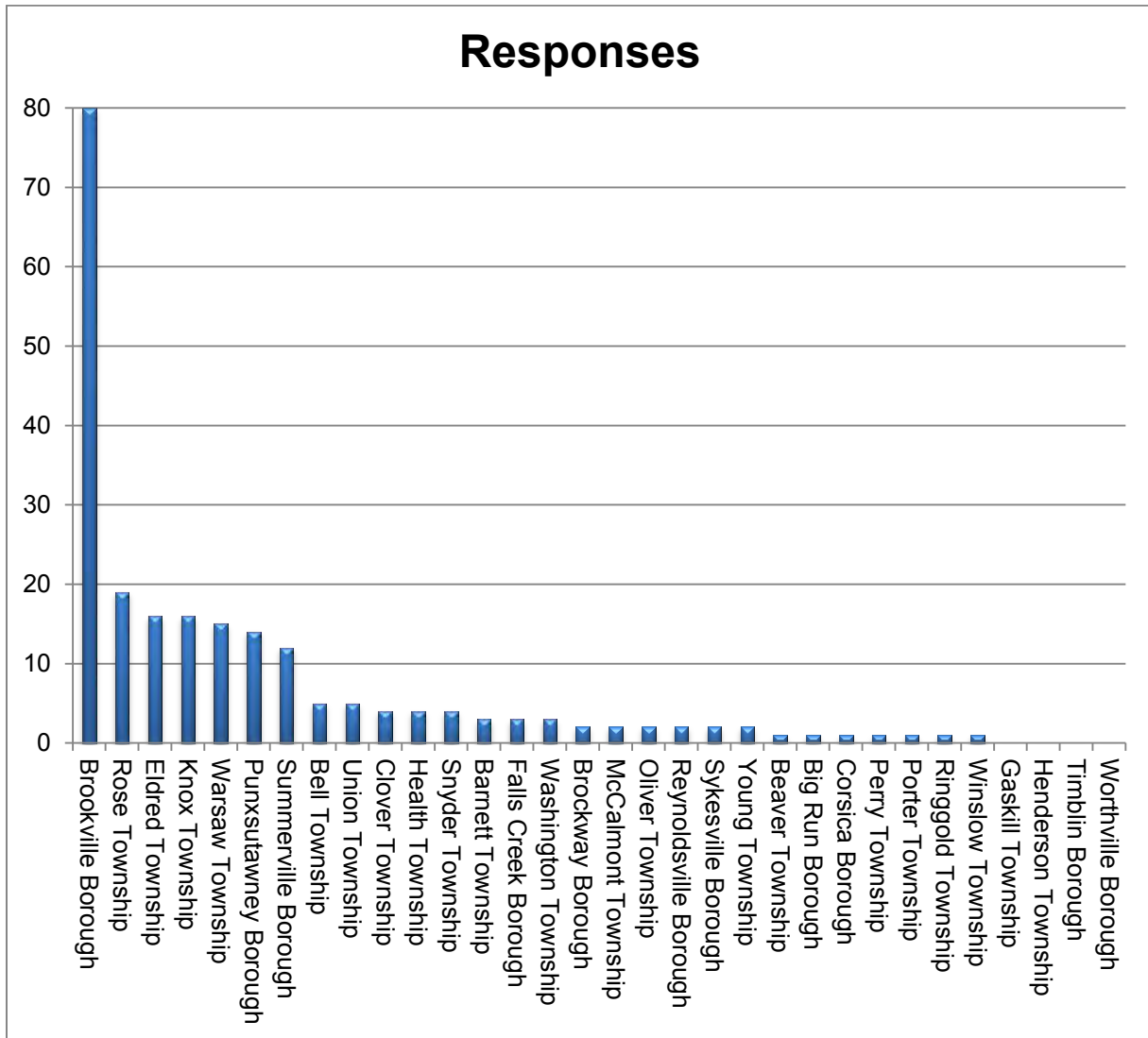
Overview

The following provides an overview of the results the community survey of Jefferson County. Based on the results of the survey, the following generalized comments provide a context and overview of the results spelled out in more detail on the following pages:

- The results show that most residents like the rural/small town setting offered in the County. Residents also indicate the County is a good place to raise a family.
- The respondents noted that the drugs, loss of good paying jobs and the loss of younger residents were major problems in the County. Economic development was also a common response. This is consistent with other comments made that more business/industry growth and development is needed in the County.
- There is an overwhelming perception that the history and heritage of the County, the general sense that there is good public safety and the availability of safe drinking water are County Strengths that add to the quality of life in the County.
- There is an overwhelming perception that the lack of employment opportunities, shopping choices and social/cultural/entertainment options along with air service and housing/property conditions are County Weaknesses that detract from the quality of life in the County.
- The rating of public services and facilities suggests a high satisfaction with “the basics” such as fire, police, electric service, as well as with the overall visual quality/aesthetics of the County and with public sewage and water service.
- Public transit is seen as the poorest of services, with municipal street/road maintenance, recreational facilities and Internet/cellular telephone service also being negatively rated.
- The results show that residents want to see more in the way of specialty retail stores, school district improvements, dining establishments and more industrial and business development in the future.
- There is overwhelming consensus on the need and want for growth and development to occur in the County. Residents feel that growth/development should occur in areas with existing infrastructure and as well as in previously undeveloped areas not having existing infrastructure.
- There is overwhelming consensus that some level of County or regional development regulations are needed to assure well-planned and orderly development. And there is general agreement that current regulations are adequate to assure well planned future development. A minority feel that no regulations at any level are needed to guide future development.

Who Responded

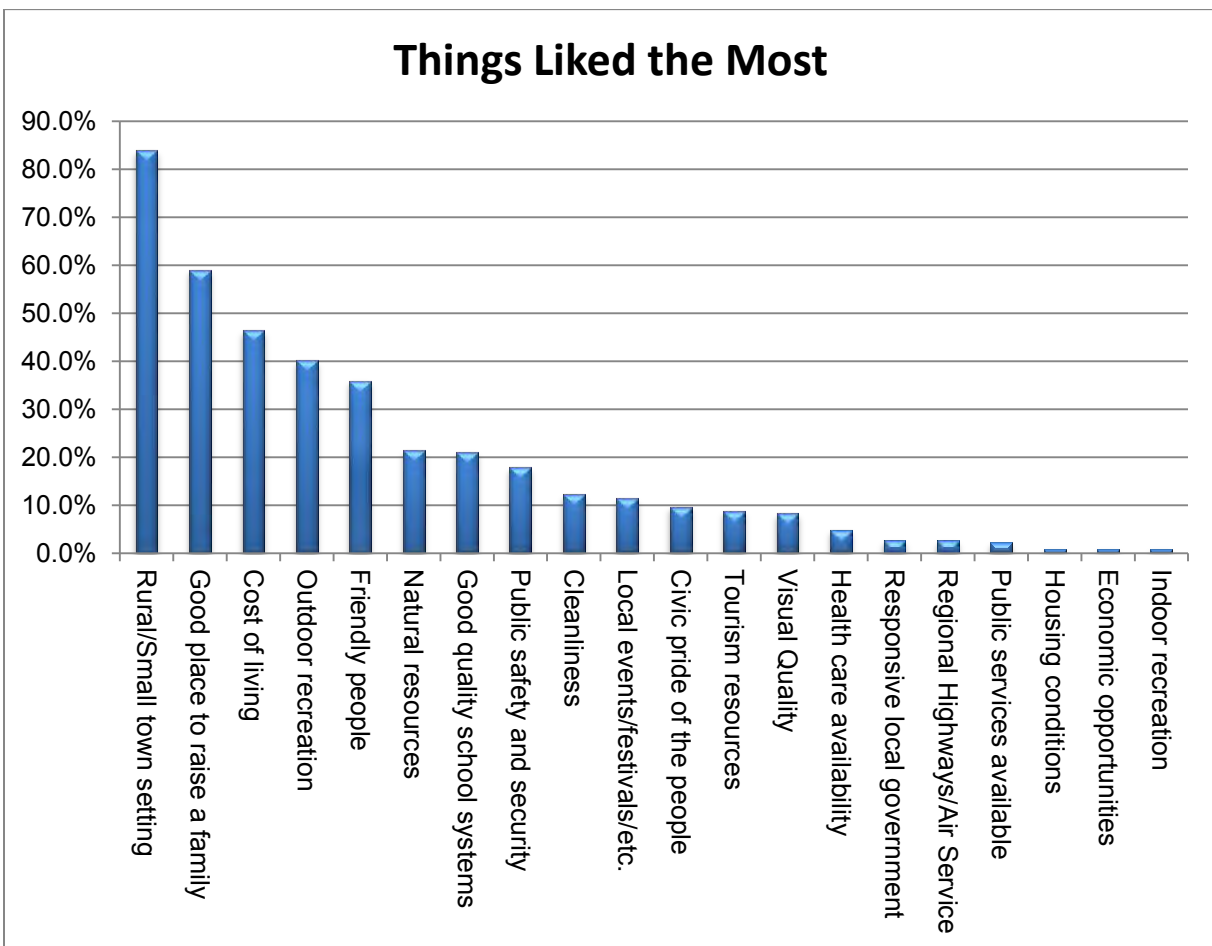
A total of 238 responses were received representing both on-line and hard copy responses. A breakdown of responses by residence reveals that responses were received from residents in 28 of the County's 32 municipalities (88%). Residents from Pinecreek Creek Twp (Clinton County) and Clarion Borough also responded to the survey. Municipalities with that had more than (10) residents respond to the survey included Brookville (80), Rose Twp. (19), Eldred Twp. (16). Knox Twp. (16), Warsaw Twp. (15), Punxsutawney (14) and Summerville Borough (12).



Things Liked the Most

Respondents were asked to choose the top five (5) things they like most about the County from an array of choices. The following highlights the most popular responses while the graphic below provides the complete results:

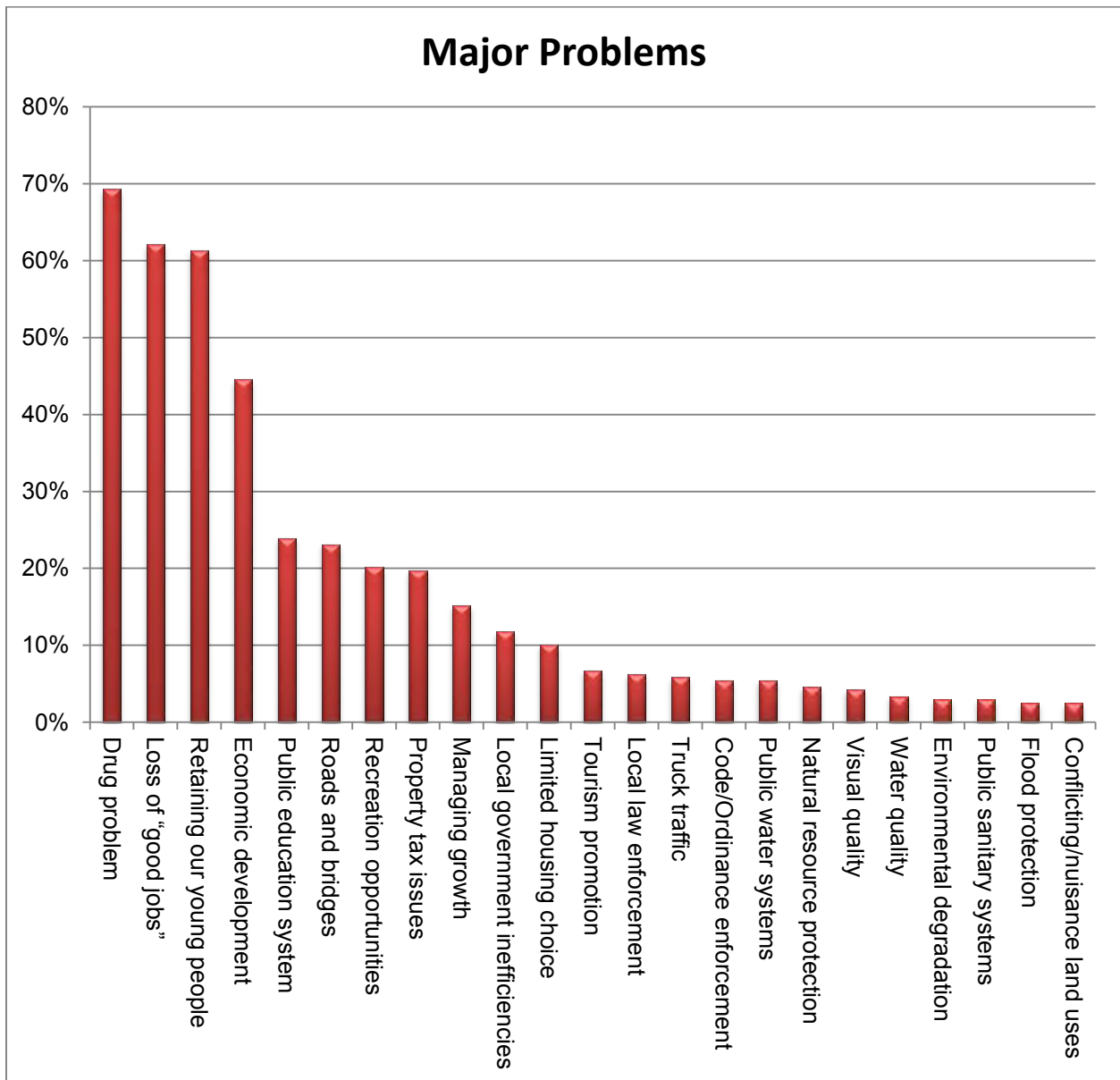
- Rural/Small town setting – 84%
- Good place to raise a family – 59%
- Cost of living – 45%
- Outdoor recreation – 39%
- Friendly people – 36%



Major Problems

Respondents were asked to identify what they thought were Jefferson County's major problems. The following highlights the most common responses while the graphic below provides the complete results:

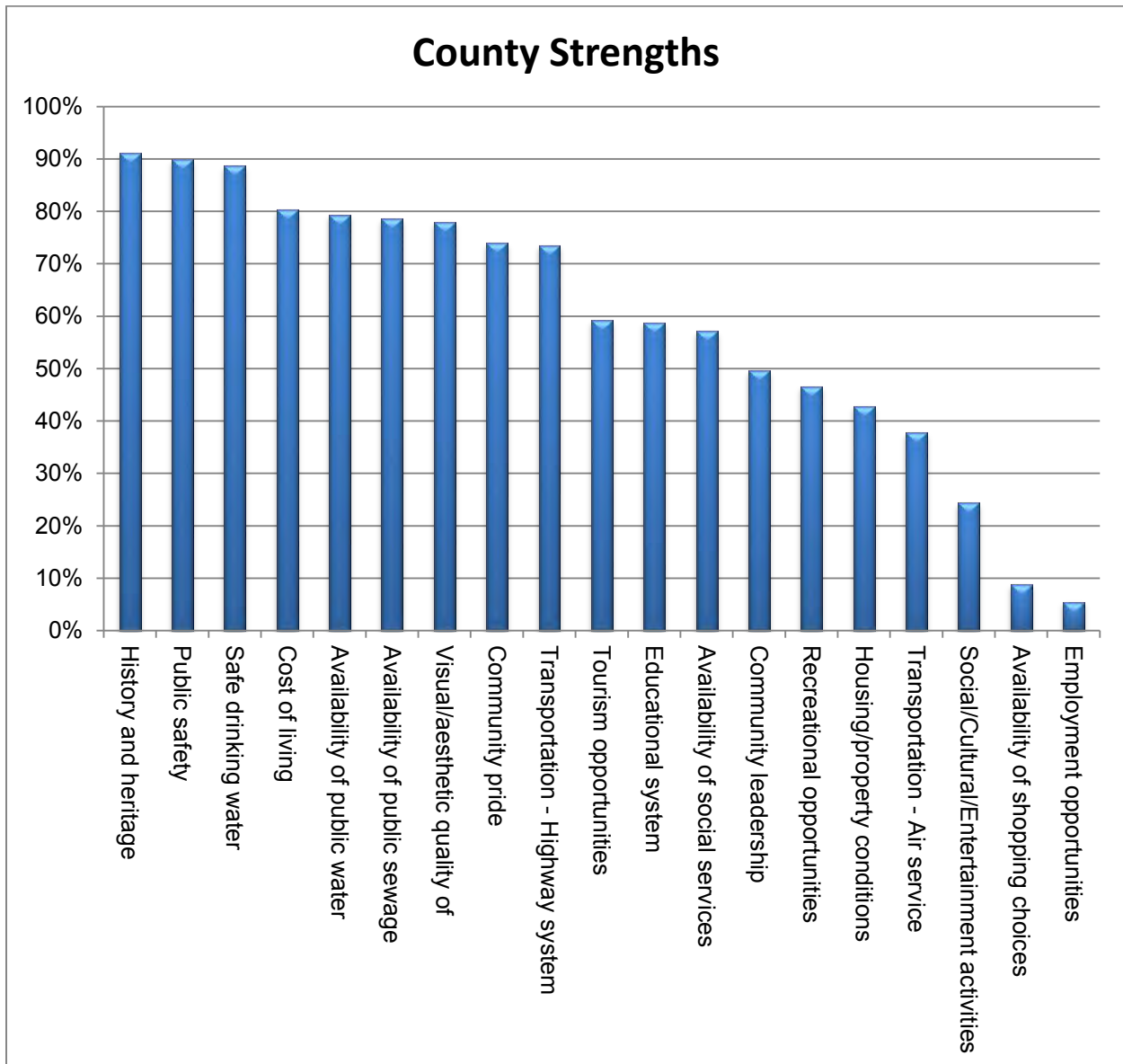
- Drug Problem – 69%
- Loss of “good jobs” – 62%
- Youth Retention – 61%
- Economic Development – 45%



Quality of Life

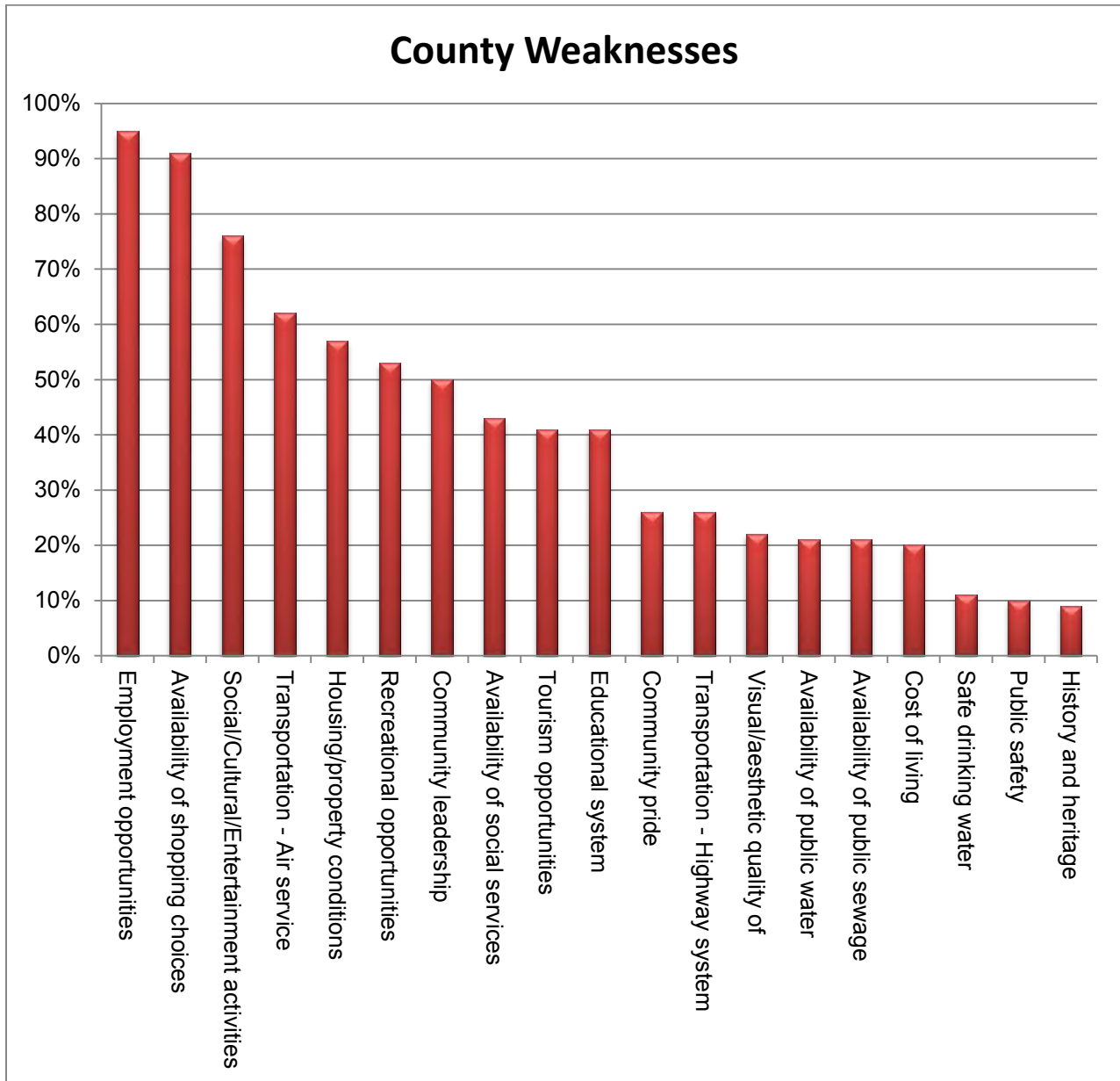
Respondents were asked to characterize Quality of Life issues in Jefferson County as a “Strength” or “Weakness”. The following are the top five (5) most popular responses noted as a County “Strength” while the graphic below provides the complete results.

- History and Heritage – 91%
- Public Safety – 90%
- Safe Drinking Water – 89%
- Cost of Living – 81%
- Availability of Public Water/Sewage – 79%



Conversely, the following highlights the five (5) responses most noted as a County “Weakness”. The graphic below provides the complete results.

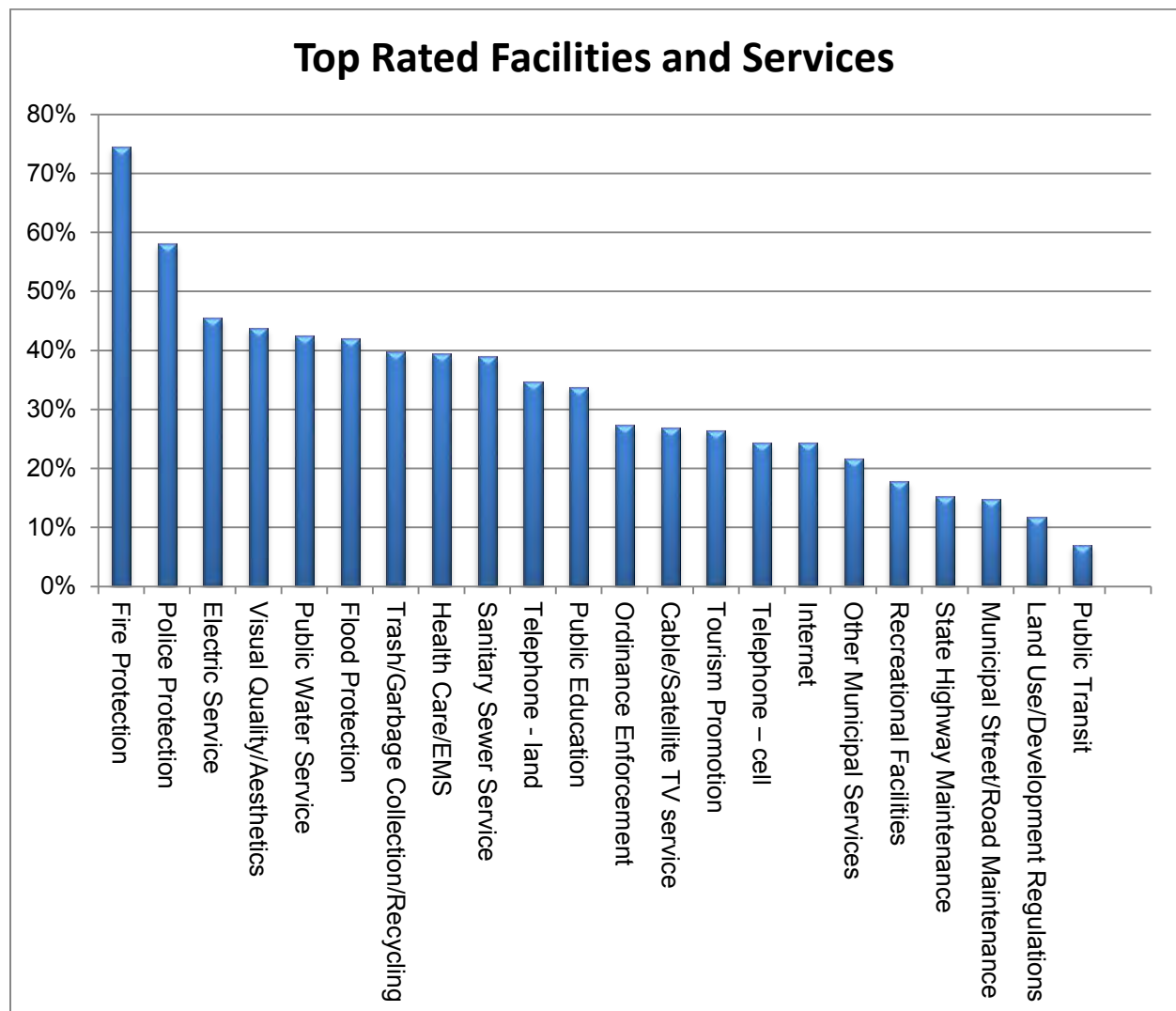
- Employment Opportunities – 95%
- Availability of Shopping Choices – 91%
- Social/Cultural/Entertainment – 76%
- Transportation – Air service – 62%
- Housing/property conditions – 57%



Rating of Services and Facilities

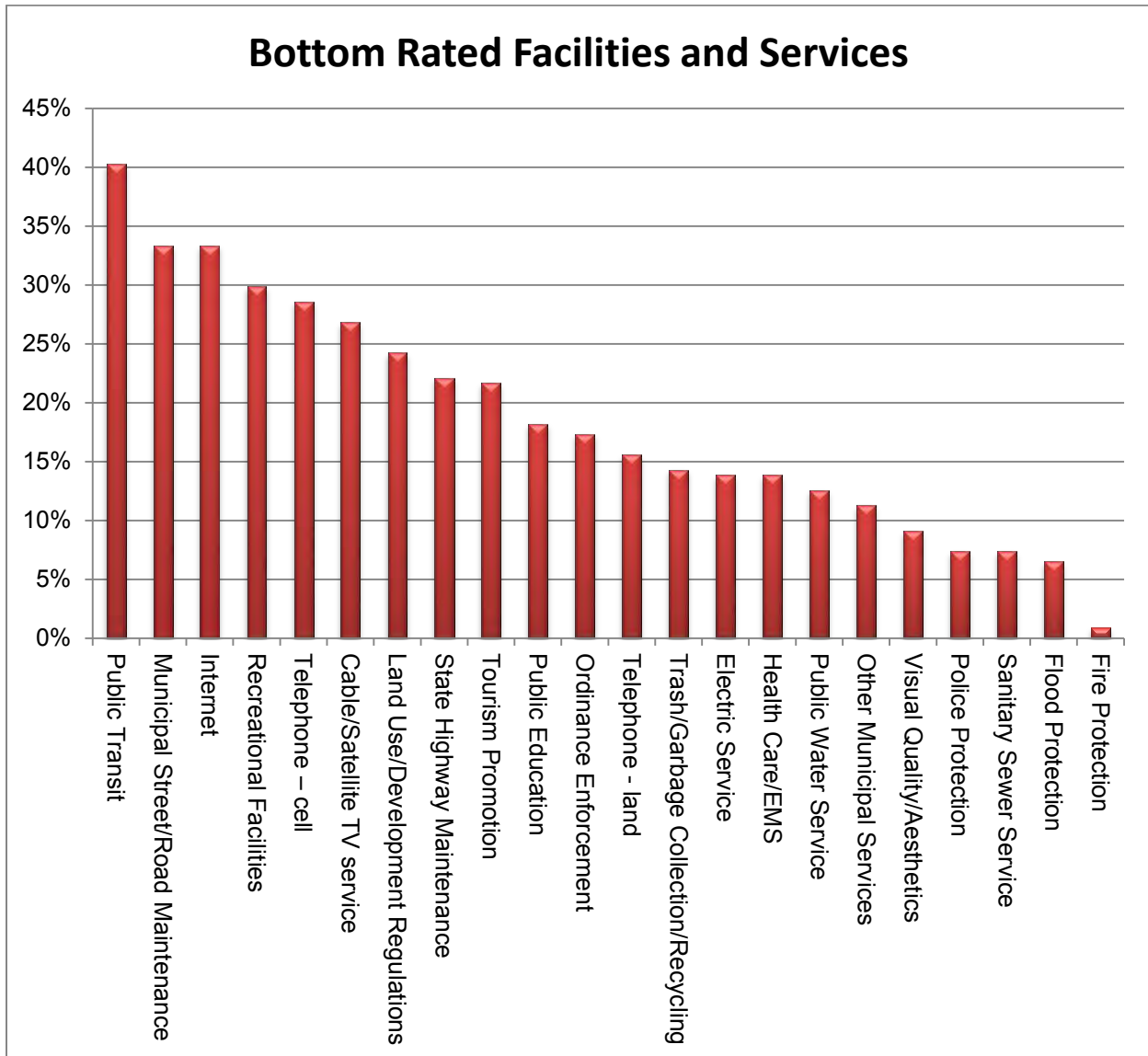
Respondents were asked to rate a range of community or public facilities and services in terms of “good”, “fair” and “poor”. Respondents were provided with the opportunity to check off “NA” if that specific service or facility is seen as being not available to them. The following highlights the top five (5) services or facilities rated “good” while the graphic below provides the complete results.

- Fire Protection – 74%
- Police Protection – 57%
- Electric Service – 46%
- Visual Quality/Aesthetics – 44%
- Public Water Service – 43%



Conversely, the following highlights the five (5) lowest rated services or facilities receiving “poor” ratings while the graphic below provides the complete results.

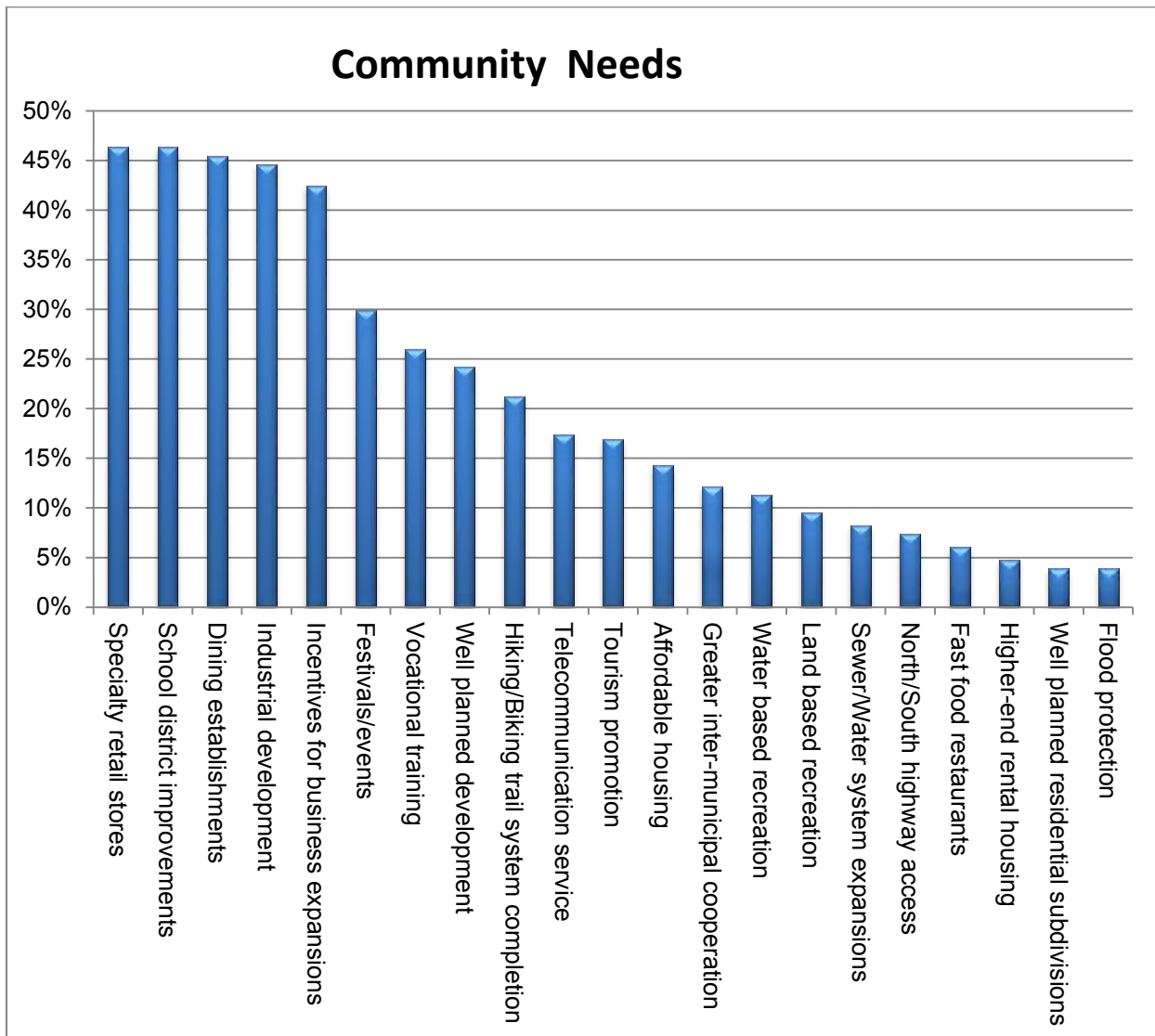
- Public Transit – 40%
- Internet – 33%
- Municipal St./Rd. Maintenance – 32%
- Recreational Facilities – 29%
- Telephone - cell – 28%



Community Needs

Respondents were asked to identify what they would like to see more of in the County in the future. The following summarizes the top five (5) responses while the graphic below provides the complete results.

- Specialty retail stores – 46%
- School district improvements – 45%
- Dining establishments – 45%
- Industrial Development – 44%
- Incentives for business expansions – 43%



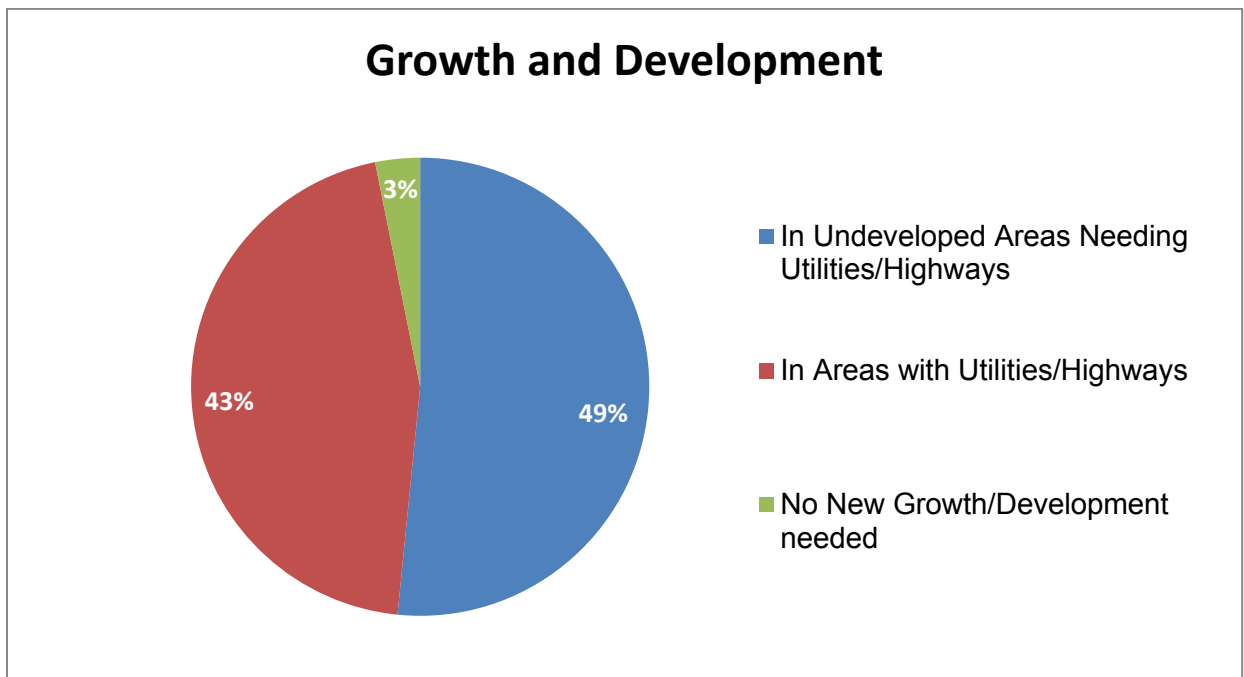
Views on Growth and Development

Respondents were asked to characterize their views on growth and development in the County. The following summarizes their responses:

- 49% of the respondents are in favor of growth and development occurring in undeveloped areas that would require constructing, improving or extending utilities and highways.
- 43% of the respondents are in favor of growth and development occurring in areas with existing utilities and highway access
- 3% of the respondents noted they are not in favor of new growth or development.

The remainder of the respondents chose to submit a written response. The following summarizes some of these comments:

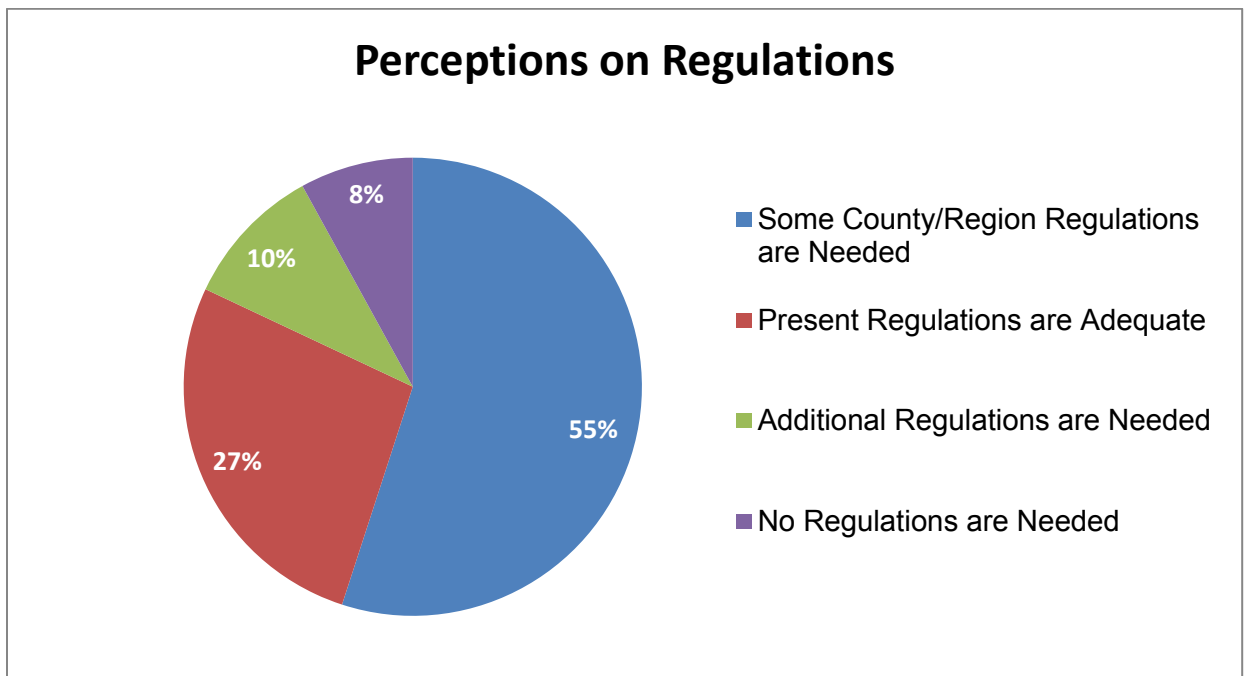
- Noted that the I-80 corridor is a key development area and that the County's location between NYC and Cleveland/Chicago is an asset.
- In favor of development but not in exchange for environmental degradation.
- In favor of development but not if higher taxes are needed to pay for it.
- Additional development is needed to meet the needs of our younger people.



Perceptions – Regulations Guiding Well-Planned Development

Respondents were asked to characterize their views on developmental regulations in their respective municipality in terms of four (4) specified perceptions. The following summarizes their responses, first narratively then graphically:

- 55% of respondents feel that some County or regional developmental regulations are necessary to assure well-planned and orderly development across municipal boundaries and to avoid future problems and conflicts
- 27% of respondents feel that the existing development regulations in their municipality are adequate.
- 10% of respondents noted that additional development regulations are needed in their municipality.
- 8% of respondents feel that development regulations are not necessary.



Comments

Space was provided to allow respondents to make comments related to the comprehensive planning process. As would be expected, these responses were quite diverse. A general textual analysis reveals a number of common and/or repeated words and phrases, such as *Jobs, Shop, Brookville, County, Community, History, and Rural*. The responses were compiled into these seven (7) categories. The responses were delineated and further characterized below.

Category	General Characterization
Jobs	<ul style="list-style-type: none"> • Focus on jobs and training our residents for those jobs. • Job creation is key to the County's success. • County needs to see some economic expansion and job growth if it expects to keep the younger generation here.
Brookville	<ul style="list-style-type: none"> • Brookville is a nice looking community, but we need to focus more on attracting companies and jobs. • Brookville is thought of as a safe community, but there could be more offered recreationally. • There is a need for more health care options.
County	<ul style="list-style-type: none"> • Promoting the historic qualities and outdoor recreation opportunities will benefit the County. • County leaders need to encourage community level engagement and buy-in. • Preserving the visual appearance throughout the County is important to attract tourists and those looking to relocate.
Community	<ul style="list-style-type: none"> • Younger people must be more involved at all levels of the community. • Retaining/attracting intelligent, hard-working young people is important. • Need to identify the next group of individuals who will support community groups and help support the community in general. • More indoor activities for kids to keep them active are needed.
Shop	<ul style="list-style-type: none"> • More shopping and entertainment options are needed – limited options currently. • DuBois was identified as an area offering more in terms of dining, shopping, and higher end job opportunities.
History	<ul style="list-style-type: none"> • Focusing on history is important but, we need to improve and expand our public sewer and water systems to open more land areas to development or expansion. • Certain historical factors should be preserved but they should not be used to hinder growth into the future.
Rural	<ul style="list-style-type: none"> • Create a coalition of sorts and work together with the rural communities. • Improving broad-band service for residents and businesses will benefit the rural areas in the County.